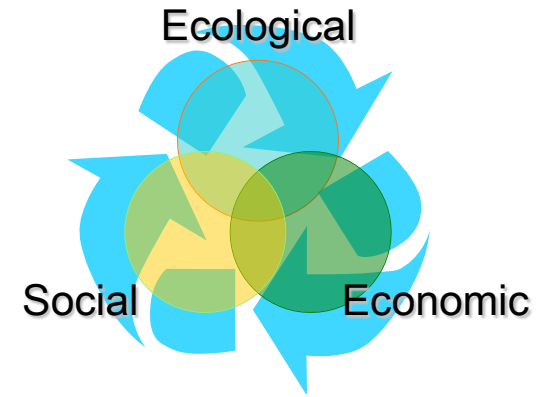




**UCSB Sustainability**



# Strategic Planning for Zero Waste: Meeting the 2020 Goal



Mo Lovegreen, Executive Officer, Department of Geography  
University of California, Santa Barbara

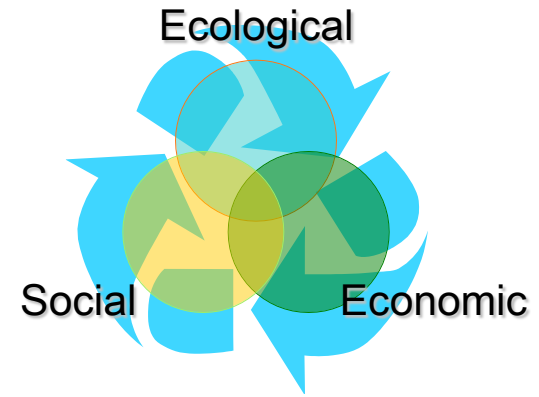


**UCSB Sustainability**

# Goals:

**75% diversion in 2012**

**95% diversion in 2020**



Mo Lovegreen, Executive Officer, Department of Geography  
University of California, Santa Barbara



# UCSB Sustainability -Current System



Recyclables go into this bin.

Each night, Custodial Services takes it to the blue dumpster.

## recycling

use this co-mingled bin to recycle:

### metal

aluminum cans  
tin foil  
paper clips  
staples...



### plastic

clean food containers  
plates  
bottles  
coffee lids  
utensils...



### paper

newspapers  
magazines...



### cardboard

packaging materials  
coffee sleeves  
boxes...



### glass

bottles  
jars...



do NOT use this co-mingled bin for:

food waste or compost

plastic bags

styrofoam

burning materials

paper towels or tissues

liquids

e-waste

(batteries, CDs, videotapes, appliances)



Mo Lovegreen, Executive Officer, Department of Geography  
University of California, Santa Barbara



# UCSB Sustainability -Current System



Landfill waste goes into this bin.

Each night, Custodial Services takes it to the tan dumpster.

## landfill



use this garbage bin for:

### styrofoam

cups  
plates  
containers  
packaging materials...



### plastic bags

grocery bags  
candy wrappers  
Ziploc's™  
chips & snack bags...



### dirty food containers

condiment packages  
straws  
cellophane wrap...



### used tissues & paper towels



### food scraps

fruit peels  
unfinished food...



do NOT use this garbage bin for:

### clean recyclables

metals  
plastics  
paper  
cardboard  
glass...



### burning materials

#### syringes

#### e-waste

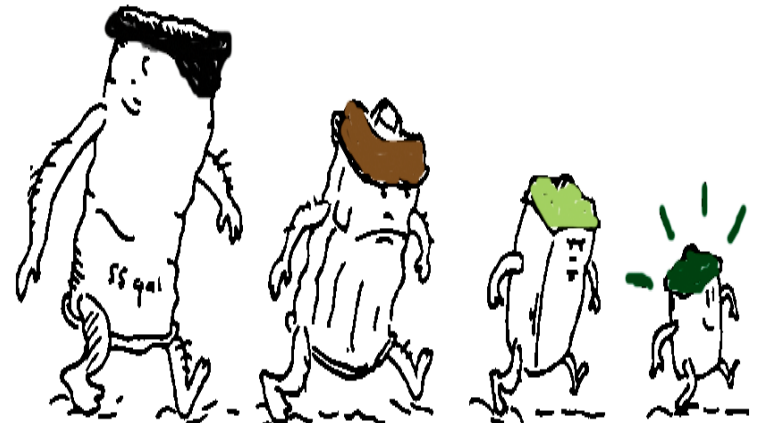
(batteries, CD's, videotapes, appliances...)



or this bin



The Evolution of the Waste Can





# UCSB Sustainability -Current System



Office Pack Recycling goes into this bin.

When it is full, custodial services takes it to the white dumpster.

## office pack

use this office pack bin to recycle:



computer paper

copier paper

fax paper

colored paper

lined paper

envelopes

letterhead

Post-It™ notes



Or this bin



do NOT use this bin for:

newspapers or magazines

cardboard

paper towels or tissues

syringes

astrobrites/fluorescent paper

burning materials

liquids

anything other than clean paper



Mo Lovegreen, Executive Officer, Department of Geography  
University of California, Santa Barbara



# UCSB Sustainability -Current System



In strategic locations, e-waste goes in these bins.



Weekly AS Recycling picks it up, and a certified takes it away.



Mo Lovegreen, Executive Officer, Department of Geography  
University of California, Santa Barbara



## UCSB Sustainability -Current System



- ☉ Departments can also request that Furniture Services pick-up E-waste –which goes to a certified recycler
- ☉ In 2010/2011, we added an additional sort for all our waste in an attempt to capture an additional 10-14% of recyclables
- ☉ Pre- and post-consumer food waste is collected in all 4 dining facilities and is mixed with green waste for compost; cooking oil is recycled and reused

Mo Lovegreen, Executive Officer, Department of Geography  
University of California, Santa Barbara





## UCSB Sustainability - REDUCE

- 🕒 **Microchemistry**- The study of chemical reactions, using small quantities of materials
- 🕒 **Systemwide Contracts**-Environmentally Preferable Purchasing (EPP) is a strategy that seeks to procure products and services with a reduced or minimal (ideally zero) environmental impact, as compared to other similar products/services that serve the same purpose





# UCSB Sustainability - REUSE

## Chemical Exchange Program

**Problem:** Unused chemicals are being labeled as waste when labs are done using them

**Solution:** If you know of a nearby lab that uses that chemical, offer it to them free of charge. If not, departmental listserves are another easy way to offer up unused chemicals. Moreover, the same people that pick up your waste will pick up chemicals to be re-distributed. Alternatively, you could donate your unused chemicals to the **Chemical Exchange Program**



Mo Lovegreen, Executive Officer, Department of Geography  
University of California, Santa Barbara



# UCSB Sustainability - REUSE



## Surplus Inventory Program

<http://surplus.eri.ucsb.edu/inventory.php>

The Surplus Inventory Program allows users to give away or find equipment, supplies, and furniture from the laboratory or office. All items posted here are for free to UCSB staff, faculty, and students for use on campus.

We built in an approval system to help users navigate the steps to properly exchange equipment. The person posting an item fills out a simple web form providing the necessary information. Once the person posting submits this information, a chain of automatic notification emails is started.



Mo Lovegreen, Executive Officer, Department of Geography  
University of California, Santa Barbara



# UCSB Sustainability - Recycle



- ⊖ Campus Compost Pilot – will run winter quarter 2012
  - ⊖ Food only waste for winter quarter in the 6-13 birtha's around the eateries (Arbor, UCen, Coral Tree, and Courtyard Café)
  - ⊖ If successful, will convert all the containers/utensils used by UCen to biodegradables for spring quarter

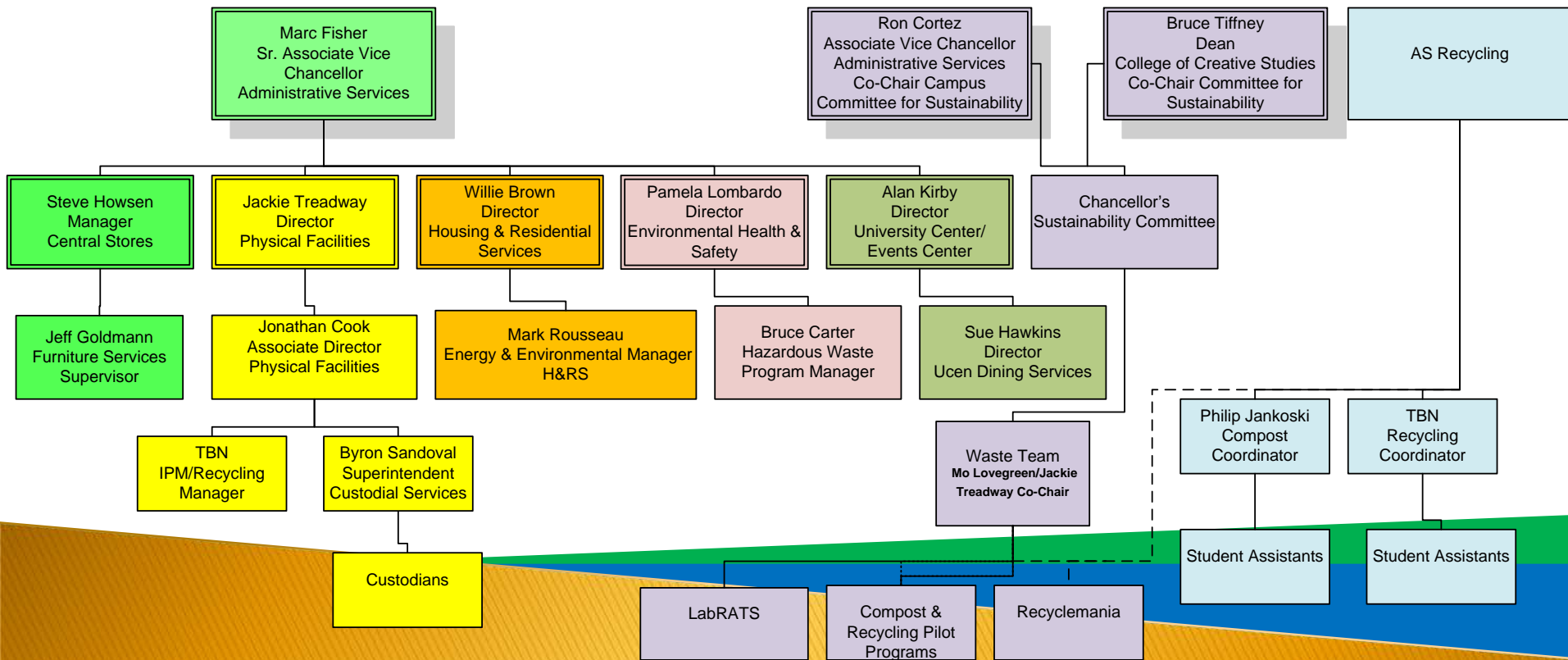


- ⊖ Currently modifying exterior bins and putting landfill & recyclables next to each other



# UCSB Sustainability - STRUCTURE

## UCSB CAMPUS STRUCTURE FOR RECYCLING 2011-2012

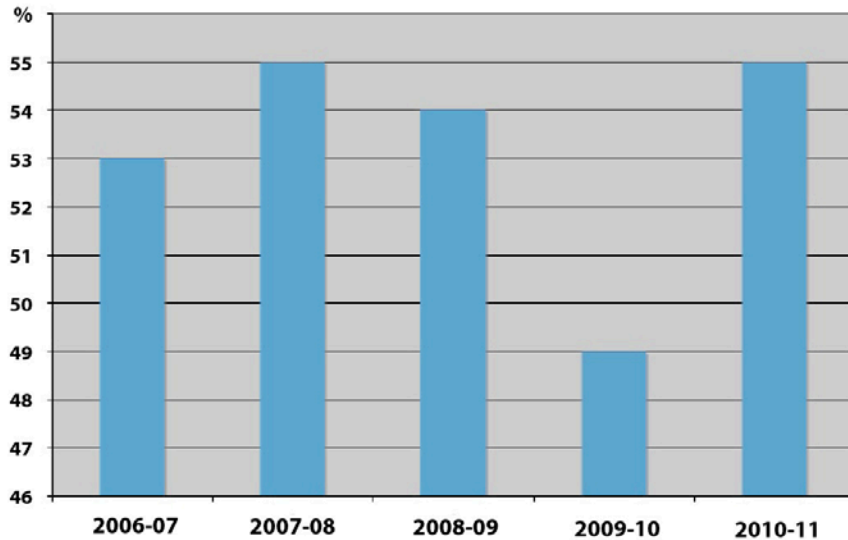


**Mo Lovegreen, Executive Officer, Department of Geography  
University of California, Santa Barbara**

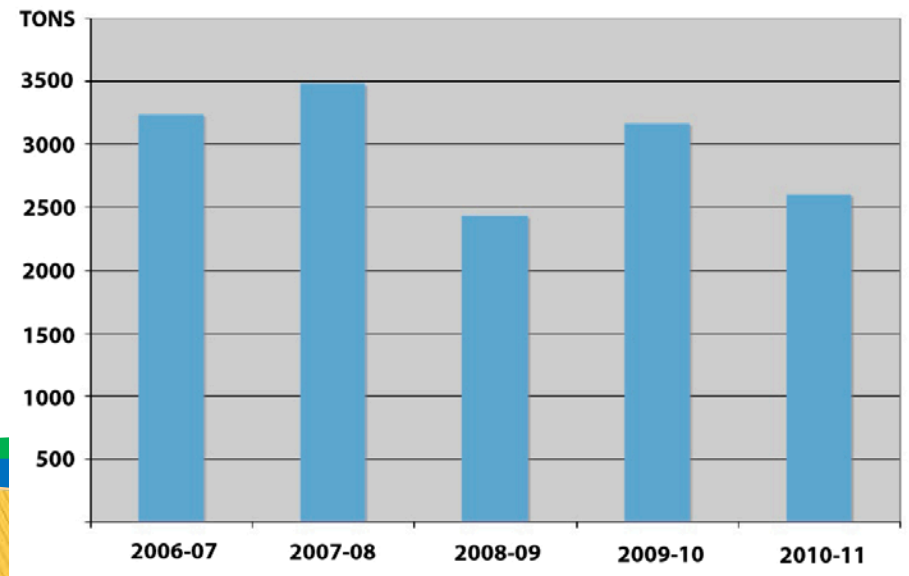


# UCSB Sustainability - Statistics

## % Diverted Over the Past 5 Years\*



## Total Tonnage Over the Past 5 Years\*



Mo Lovegreen, Executive Officer, Department of Geography  
University of California, Santa Barbara

\*Graphs prepared by Art Battson, Physical Facilities



# UCSB Sustainability - Challenges

## 11 Lab Buildings (needles & containers)

Bldg	# of 4Yard Dumpsters	Svc Frequency	Notes
#526 Webb Hall	1	M F	
# 556 Eng 1 (HFH)	2	M W F	
#544 Noble Hall	1	M W F	
#551 Psychology	1	M W F	
#555 M S I	1	M W F	
# 557 Chemistry	3	M W F	
# 572 Physics	2	M W F	
# 521 Bren	1	M W F	
# 225 E S B	2	M W F	
# 235 L S B	2	MTWHF	Receives Bio 2 waste during construction
#266 Elings Hall	1	M W F	

\*standard nominal "4-Yard dumpster is actually 41"x 41" x 72" volume = 70 cu ft.

\*17 dumpsters serviced as noted equates to 3780 potential uncompacted cu ft refuse going straight to landfill, or 140 cu yards per week not getting line sorted.



# UCSB Sustainability - Challenges

- ⊖ Behavioral - putting things in the correct bin
- ⊖ Funding for additional bins
- ⊖ Improvements in the strategic sourcing contracts/new on-line procurement system



# UCSB Sustainability - Future Steps

- ① Continue standardizing in-building bins throughout the campus
- ① Expand recycling at sporting events
- ① Direct spend to strategic sourcing agreements
- ① Work on behavioral issues
- ① Look for opportunities to partner
- ① Take advantage of new ideas- The campus is holding its first campus recycling day on November 30<sup>th</sup> to collect e-waste, office pack





**UCSB Sustainability**

# Questions?



**Mo Lovegreen, Executive Officer, Department of Geography  
University of California, Santa Barbara**