

# Sustainability and Public Water Utilities



South Coast Sustainability Summit

UC Santa Barbara

October 13, 2011

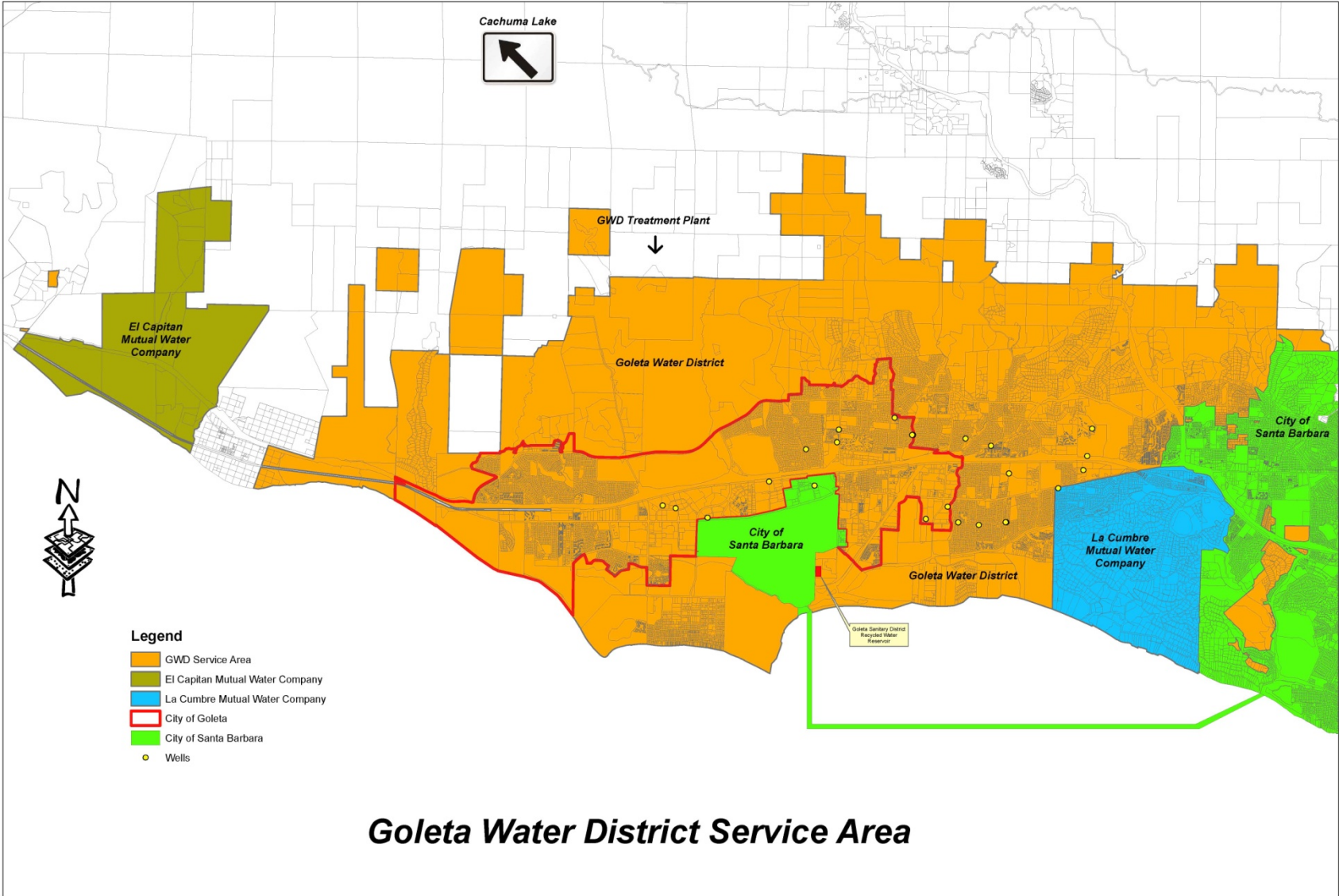
# **GWD Overview**

# Goleta Water District

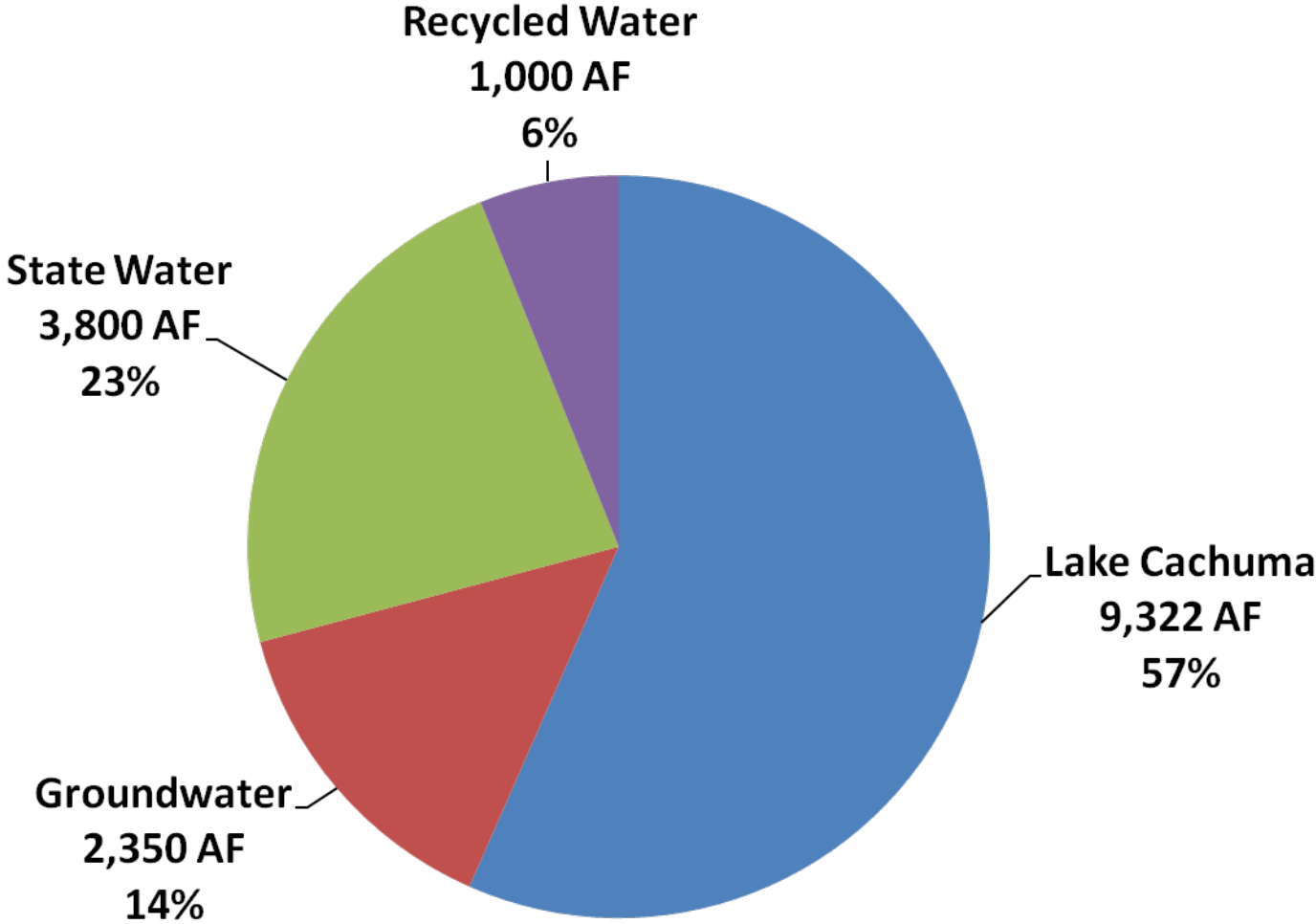
- Started in 1944
- Largest “Special District” in County
- 5-Member Elected Board
- Provides water to over 85,000 people
- Supplies 4 billion gallons of water annually; 11 million gallons per day



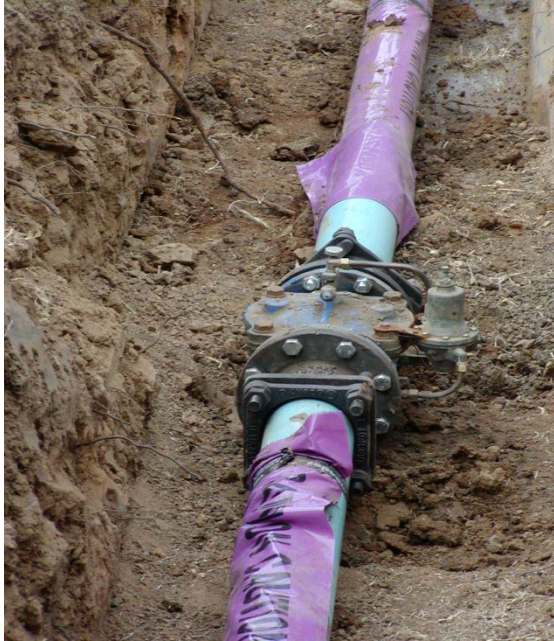
# GWD Service Area



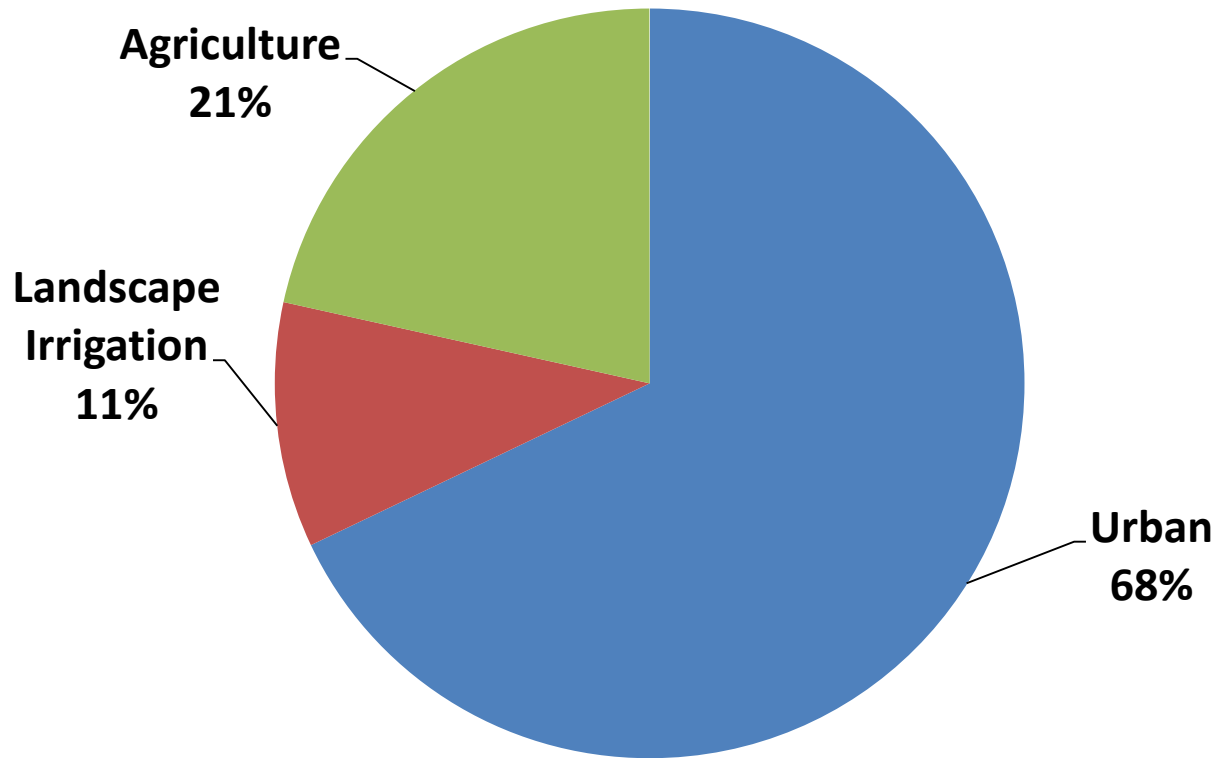
# Water Supply Sources



# Treatment & Distribution System



# Water Uses



Approximately 14,000 AFY

# **Sustainability & Efficiency Drivers**



# Public Policy



- The Clean Water Act
- The Safe Drinking Water Act

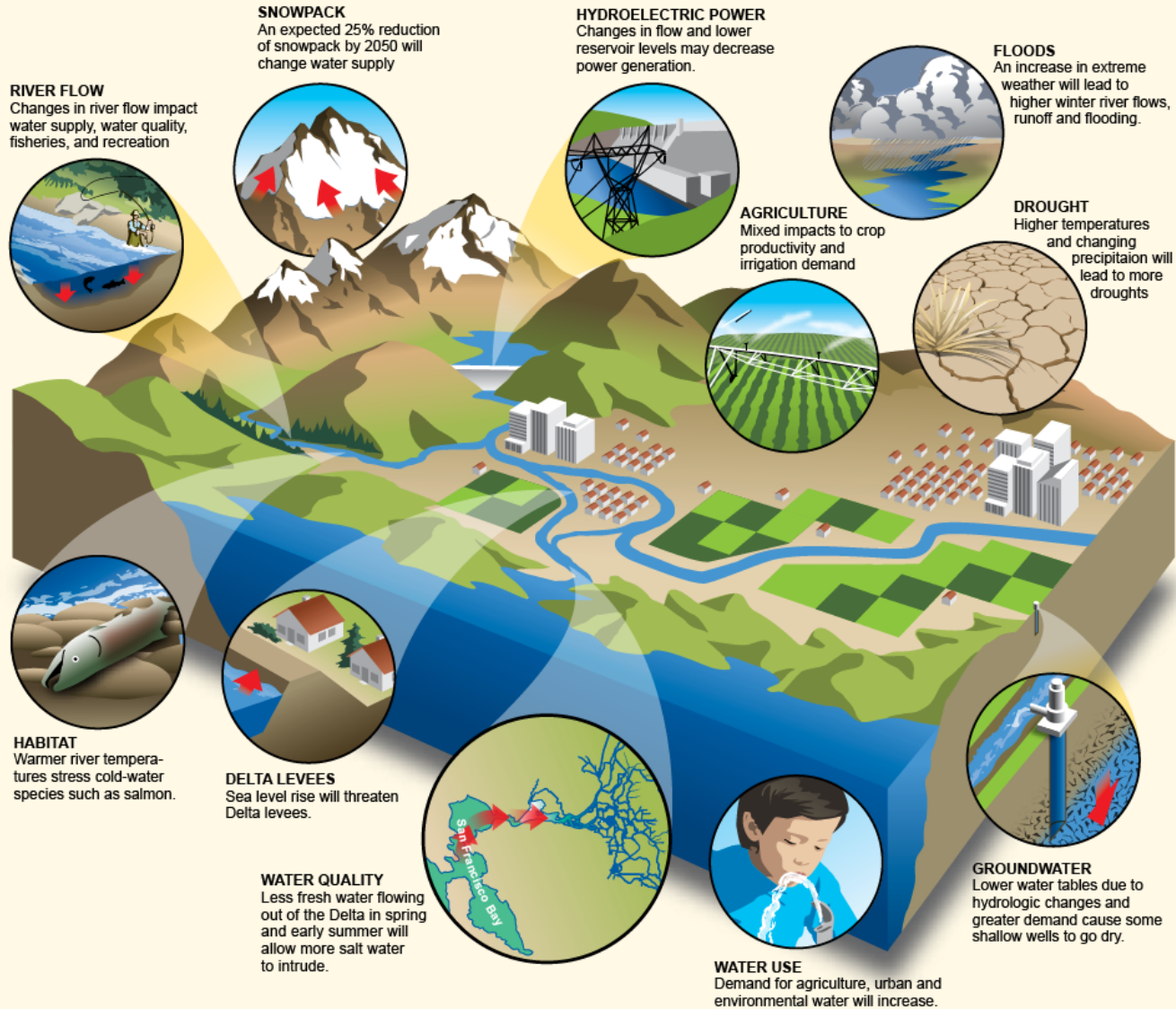


- Urban Water Management Planning Act
- State Grants – AB 1420
- Climate Change – AB 32, et seq.

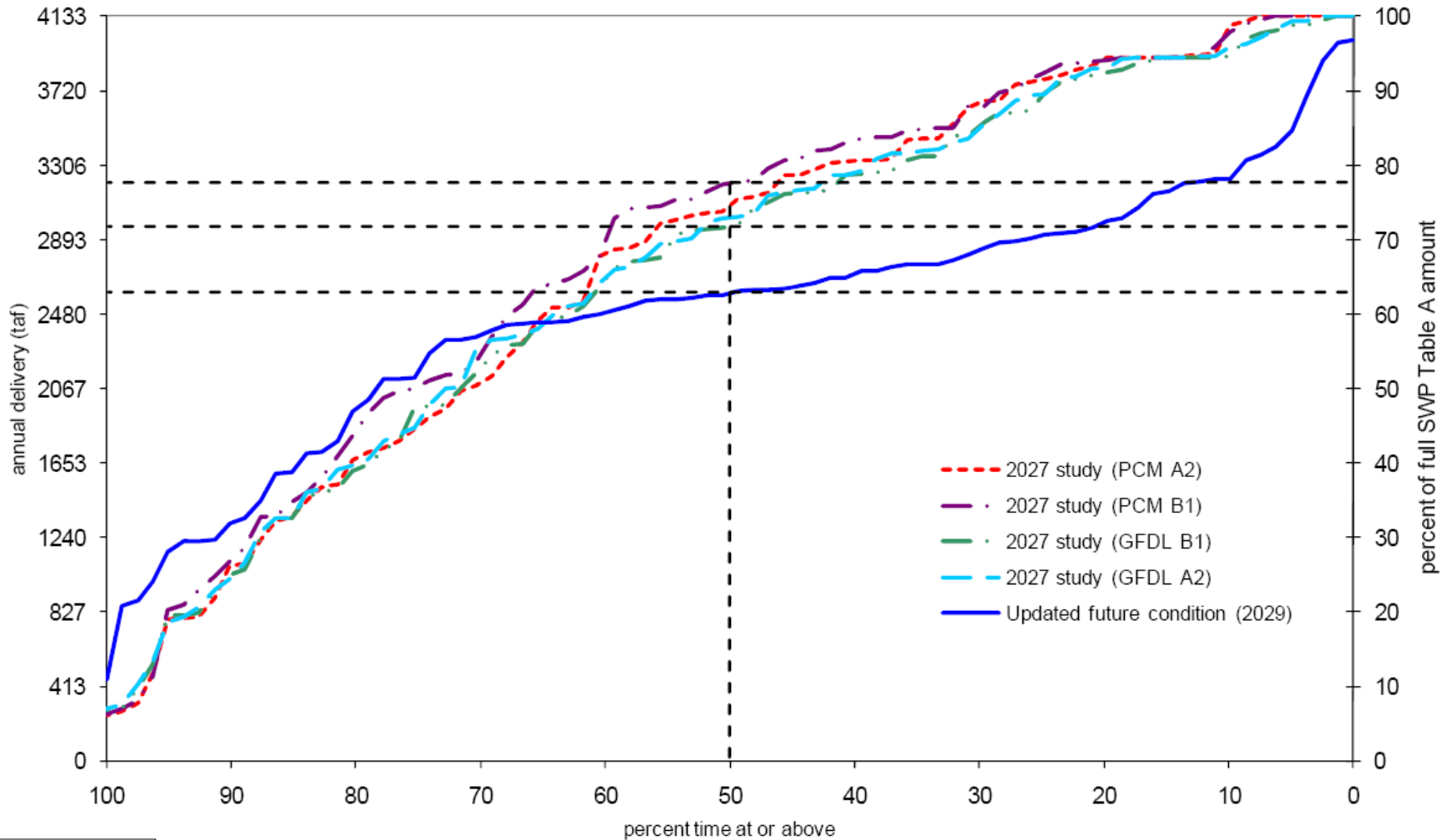


- SAFE Water Supplies Ordinance
- Wright Judgment

# Environmental Context

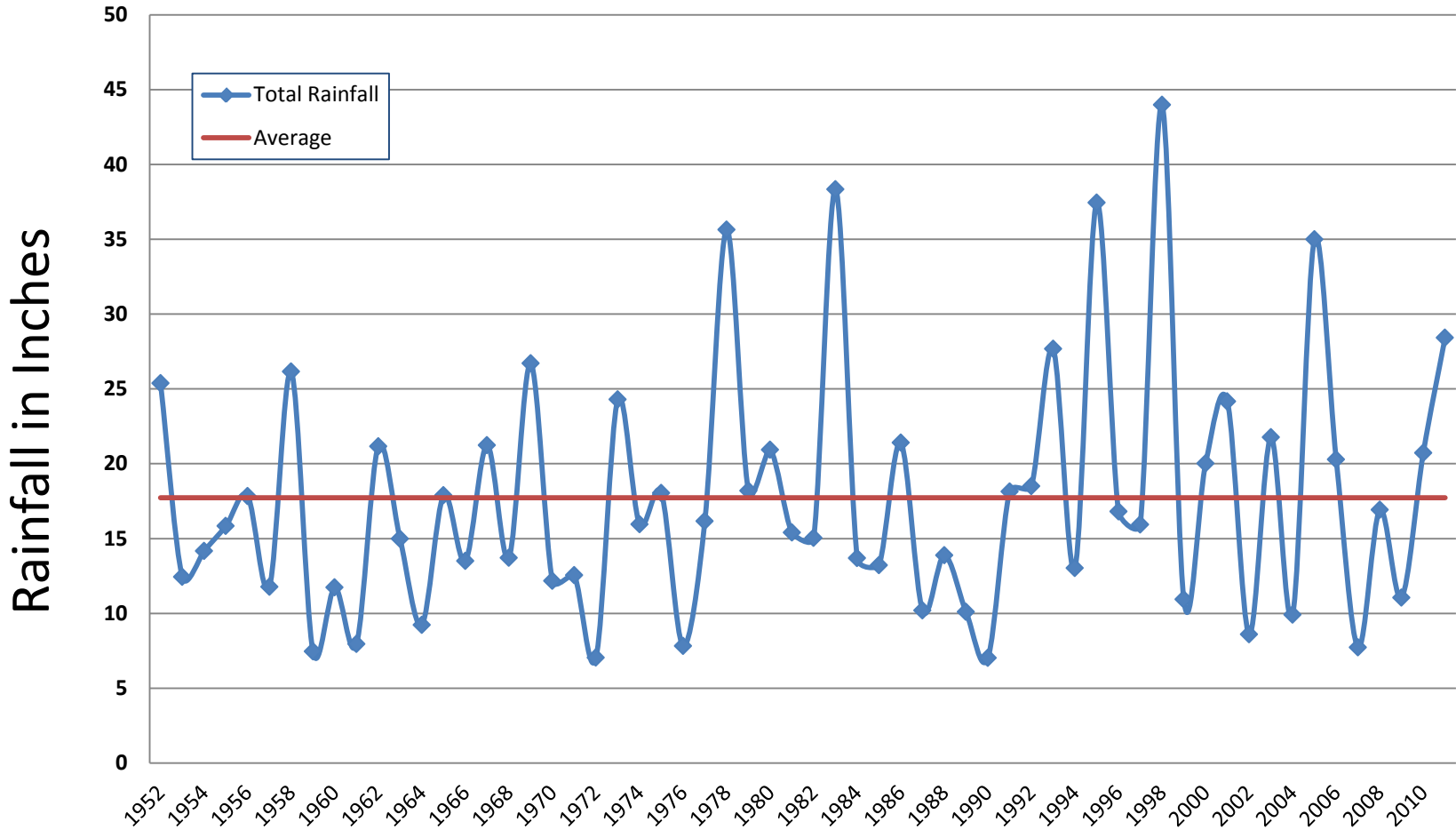


# Uncertainty



Source: CA  
Department of  
Water Resources

# Uncertainty



Source: Santa  
Barbara County  
Public Works

# **Sustainability Solutions**

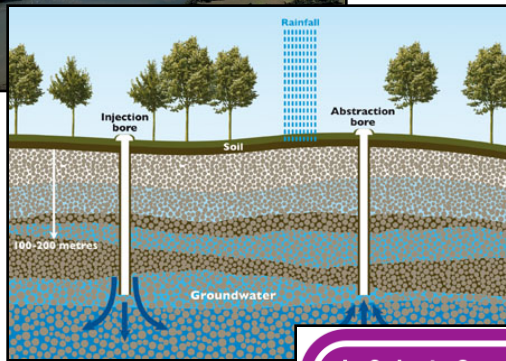
# Sustainability Solutions

1. Responsible Water Resource Management
2. Operational Efficiency
3. Community Partnership

# Sustainability Solutions

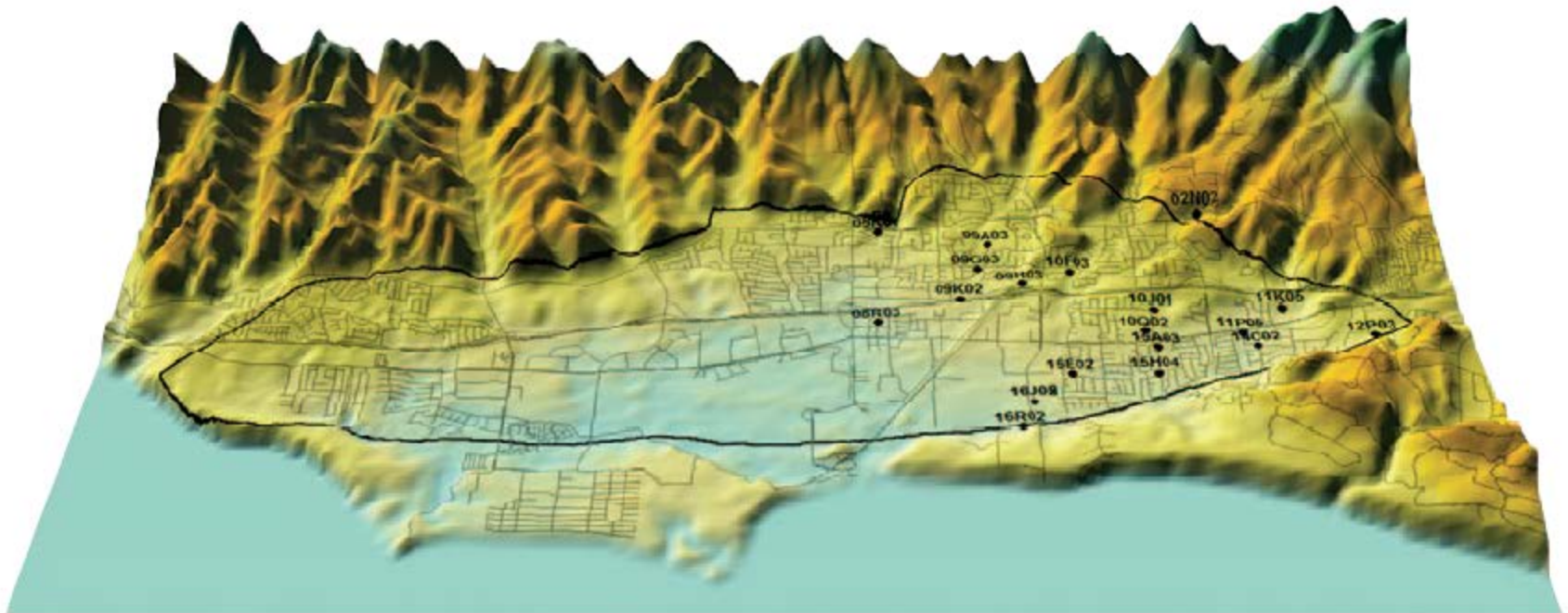
- 1. Responsible Water Resource Management**
2. Operational Efficiency
3. Community Partnership

# Water Supply Management Plan





# Groundwater Management Plan

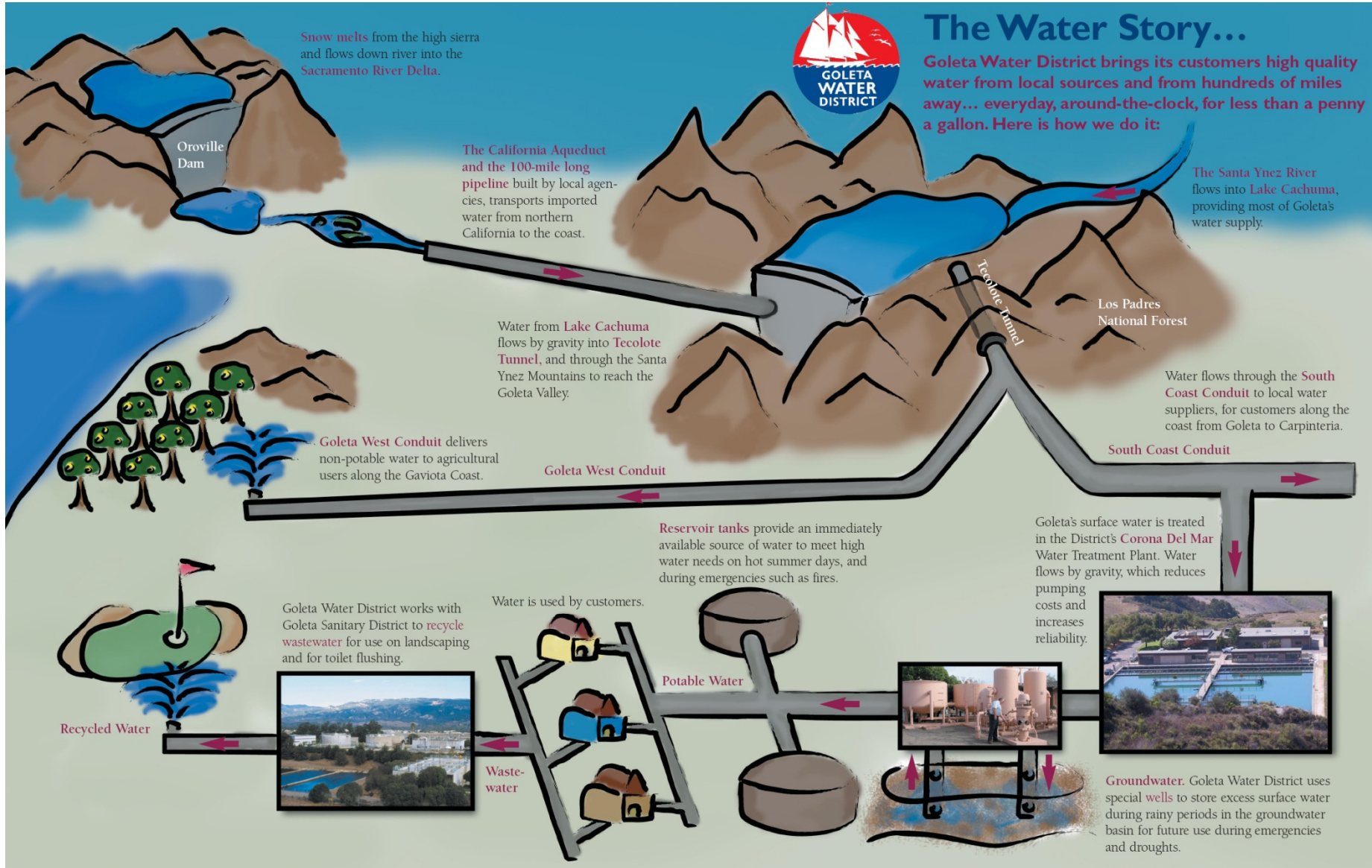


Goleta Groundwater Basin

# Sustainability Solutions

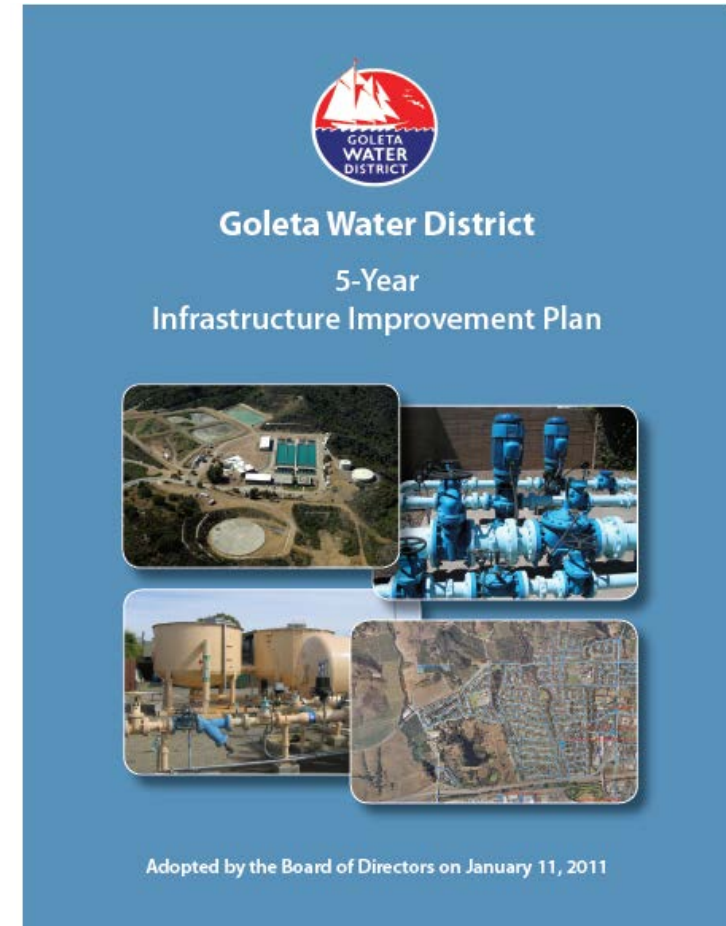
1. Responsible Water Resource Management
- 2. Operational Efficiency**
3. Community Partnership

# Gravity-fed System Design



# Smart Infrastructure Investment

- **Hydro-electric power generation**
- **Recycled water** system booster pump upgrades
- **Corrosion protection** program to stop leaks
- **Well rehabilitation** to improve basin recharge abilities
- **Sustainable sewage disposal**



# Leading the Way



- LEED Gold Certification

- Demonstration Garden



# Sustainability Solutions

1. Responsible Water Resource Management
2. Operational Efficiency
- 3. Community Partnership**

# Targeted Customer Support

- **Landscape Rebate Program for Residents and Business**
- **Water Check-ups for Residents and Business**
- **Large Customers & Institutions**



# Leveraging Relationships

- **Local Program and NGO Support**
- **Local Agencies**
- **State and Federal Agencies**



**sbwater.org**  
saving you water

The logo for sbwater.org features the text "sbwater.org" in a large, dark blue, sans-serif font. Below it, the tagline "saving you water" is written in a smaller, green, sans-serif font. To the left of the tagline is a stylized blue wave icon.



**Looking Ahead**

# Looking Ahead



- GWD Sustainability Plan (March 2012)
- State and Federal Grants
- Further relationship building

# Thank You



Chris Rich

Water Supply & Conservation Manager

[CRich@GoletaWater.com](mailto:CRich@GoletaWater.com)

(805) 964-6761 Ext. 604