



Water Pollution Source Tracking

Jill Murray, Ph.D.

City of Santa Barbara

In partnership with:

Patricia Holden, Professor

Bren School, UCSB





Partnerships & Acknowledgements

UCSB: Laurie Van De Werfhorst, Bram Sercu, Jessica Golman, James Frew, Yiping Cao

State Water Resources Control Board: Patricia Leary, Mina Danieli, Oscar Biondi, Barbara Walton.

Environmental Canine Services, LLC: Scott Reynolds, Karen Reynolds, Sable and Logan

Geosyntec: Brandon Steets, Ryan Smith

USGS: John Izbicki

City of SB Creeks: Cameron Benson, Jill Zachary, Jim Rumbley, Tim Burgess, Liz Smith

City of SB Streets: Jeff Brent, Vidal Gonzalez

City of SB Wastewater: Rebecca Bjork (now with Water Resources), Chris Toth, Manuel Romero, Louis Chiourn, El Estero Wastewater Laboratory



- Why are there so many fecal indicator bacteria (FIB) at this beach, creek, or storm drain?
- Are the FIB from human or animal waste?
- How did they get here?

TOP TEN BEACH BUMMERS		
	BEACH/COUNTY	GRAD
1.	Cowell Beach at the Wharf Santa Cruz County	F
2.	Avalon Harbor Beach, Catalina Island Los Angeles County	F
3.	Cabrillo Beach, harborside at restrooms Los Angeles County	F
4.	Topanga State Beach Los Angeles County	F
5.	Poche Beach Orange County	F
6.	North Beach Doheny Orange County	F
7.	Arroyo Burro Beach Santa Barbara County	F
8.	Baker Beach at Lobos Creek San Francisco County	F
9.	Colorado Lagoon, Long Beach Los Angeles County	F
10.	Capitola Beach Santa Cruz County	F

Malibu Times

How Is the Water?

Sewage Contamination in the Hudson River Estuary
2006 – 2010



Sewage in the Hudson: What You Can Do



Riverkeeper website

The New York Times Sewage Frequently Fouls Hudson River, Report Says



To Swim Or Not To Swim?



Measure of sewage:

Enterococcus spp. measured by Enterolert

Caveats

- Not human/sewage specific
- Grow in the environment (e.g. on gutters)
- Overprotective in some cases
- Under protective in others
- Can lead WQ improvement strategies astray

The vast majority of indicator bacteria are not pathogens, and the vast majority of pathogens are not indicator bacteria.

mission creek
sycamore
native planting
sacramento river creek

Traditional tools:
FIB in creeks, storm
drains

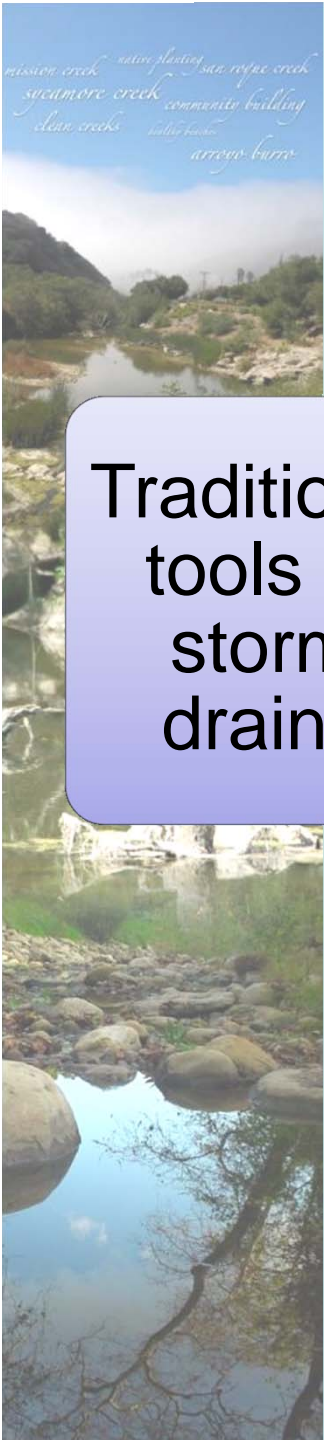
Microbial Source
Tracking
-molecular tools

**Storm drains with
consistent human waste
markers**

**(Sercu et al. 2009,
Geosyntec 2009)**

- Did not correlate with FIB
- Could not find inputs





Microbial
Source Tracking

GIS

Traditional
tools in
storm
drains

Canine
Scent
Tracking

**Source
Tracking
Protocol**
- human waste

Funded by Proposition 50 Clean Beaches Initiative
Grant Program

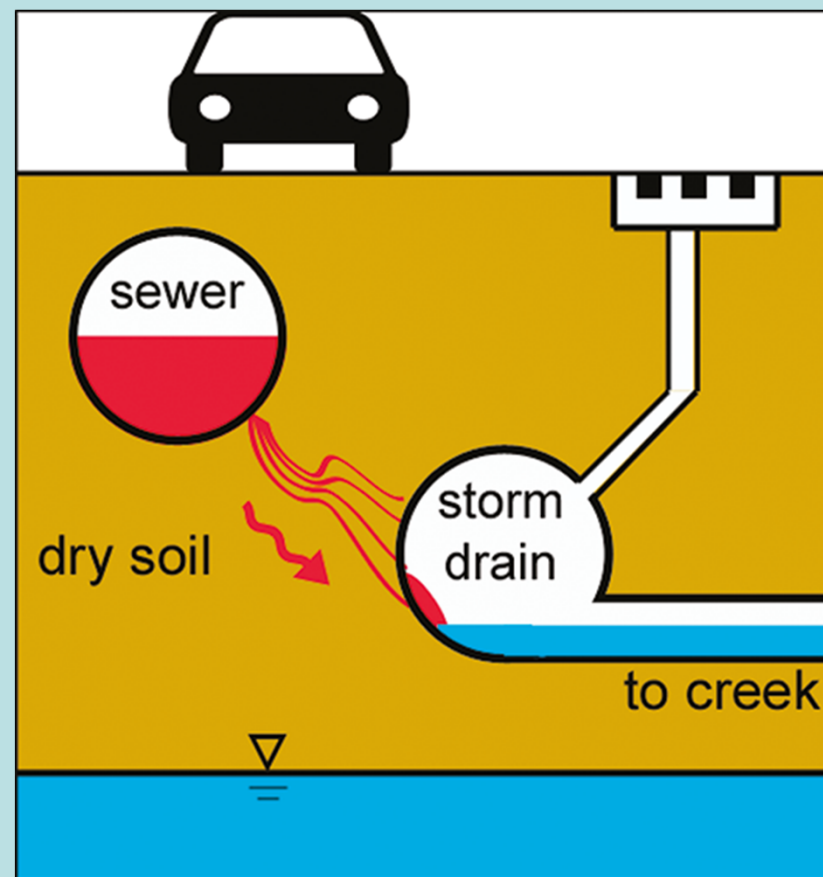


Objectives

- Test tools for identifying and locating human waste in storm drains
- Share with coastal managers, watershed groups and researchers.
- Decrease risk to swimmers
- Focus on finding illicit connections:
 - Direct connections (plumber accident)
 - Indirect connections (sewage leaks)
 - Parallel lines?



Macaulay, 1976, *Underground*.



(Sercu et al. 2011, ES&T)

Source Methods

Human Specific

Bacteroidales qPCR (Van De Werfhorst et al. 2011, *AEM*)

Bacterial Community Approach

Phylochip Microarray

T-RFLP Community Analysis

Chemistry

Wastewater tracers, including surfactants and ammonia

Caffeine, cotinine





Tracking Methods: Sewage Sniffing Dogs



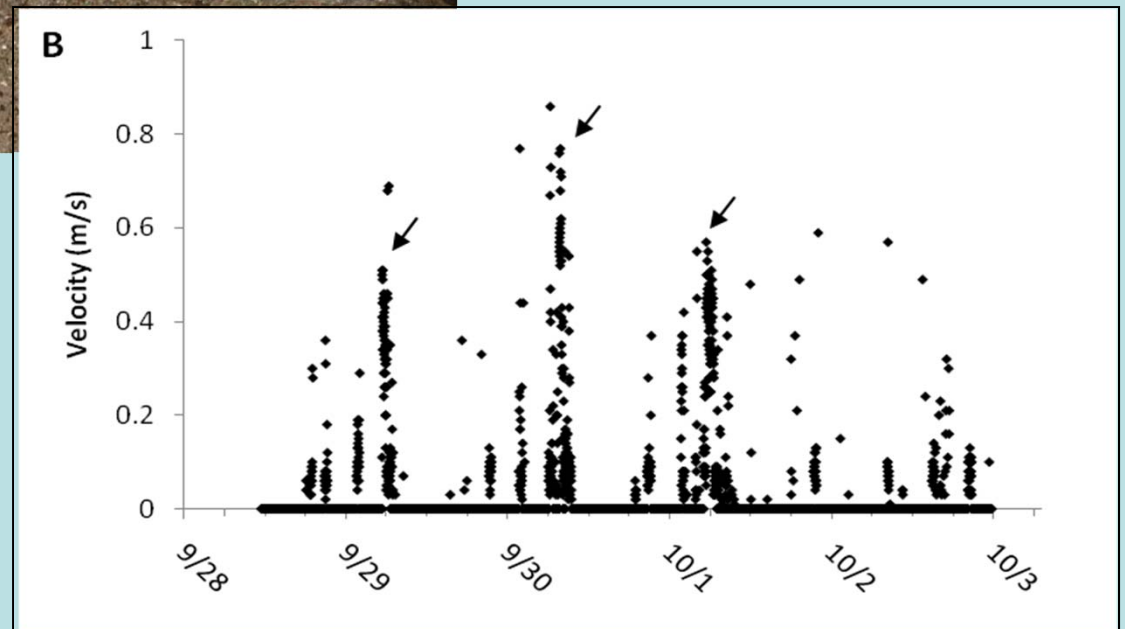
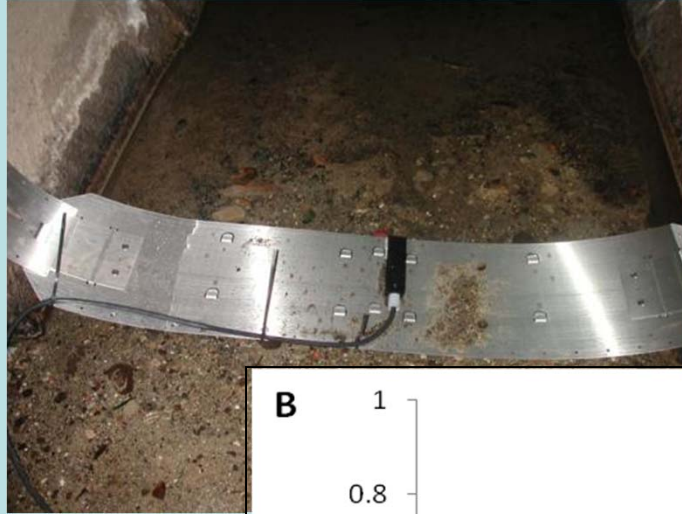
Environmental Canine Services, LLC



UCSB

Funded by WERF

Tracking Methods – Flow gauges and autosamplers



Tracking Methods – Rhodamine WT Probe

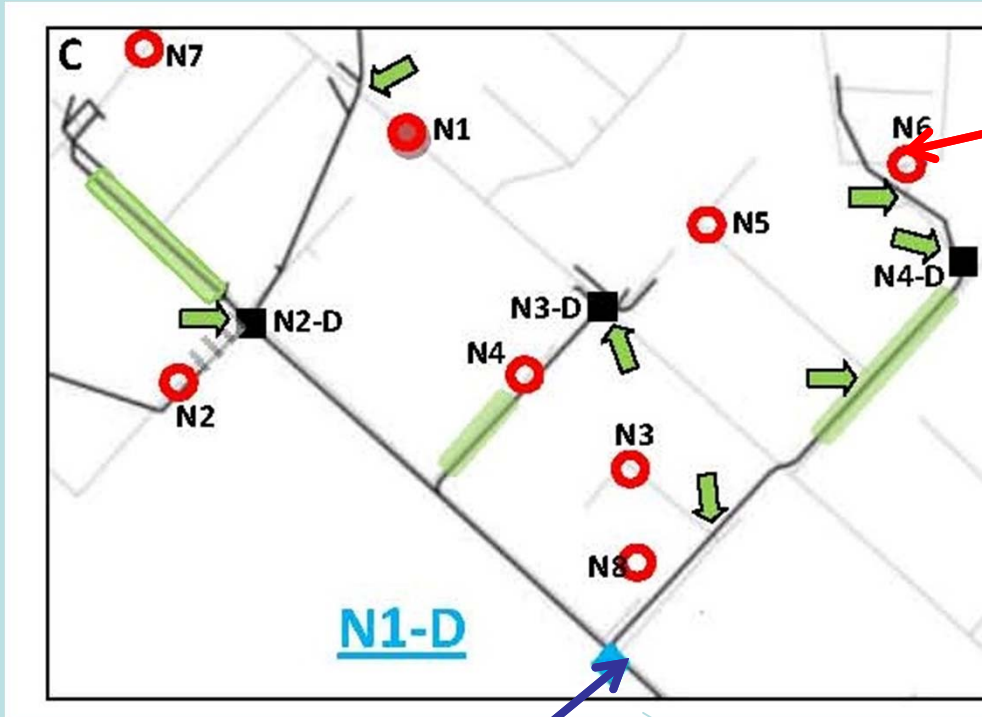


Case Study

Nopal St. Storm Drain



Dye in Sanitary Sewer



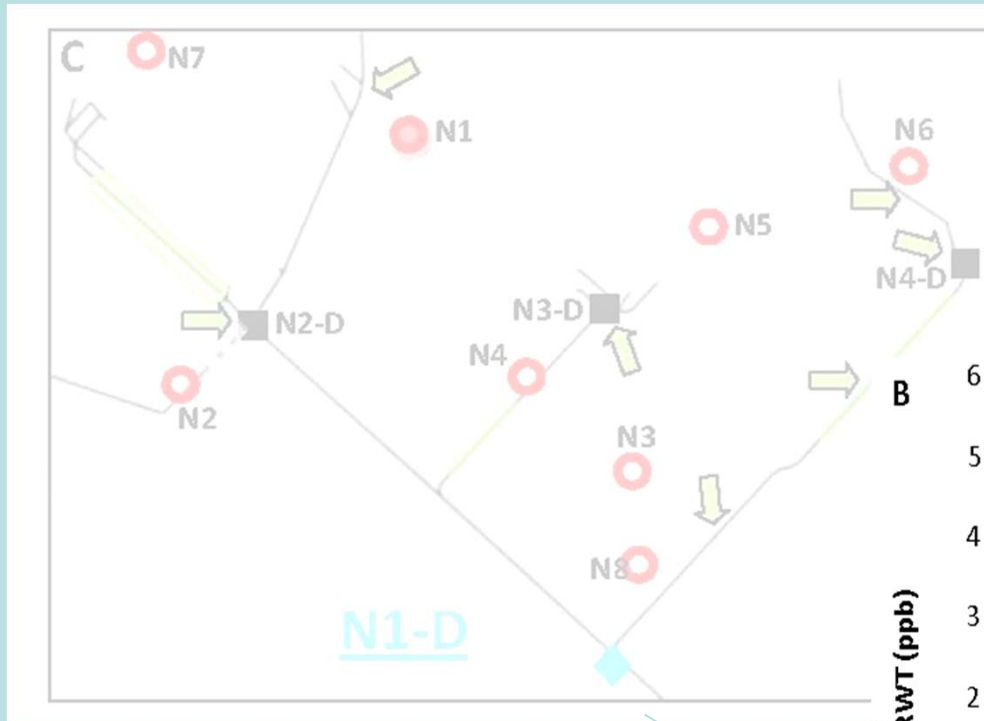
Probe in Storm Drain

Case Study

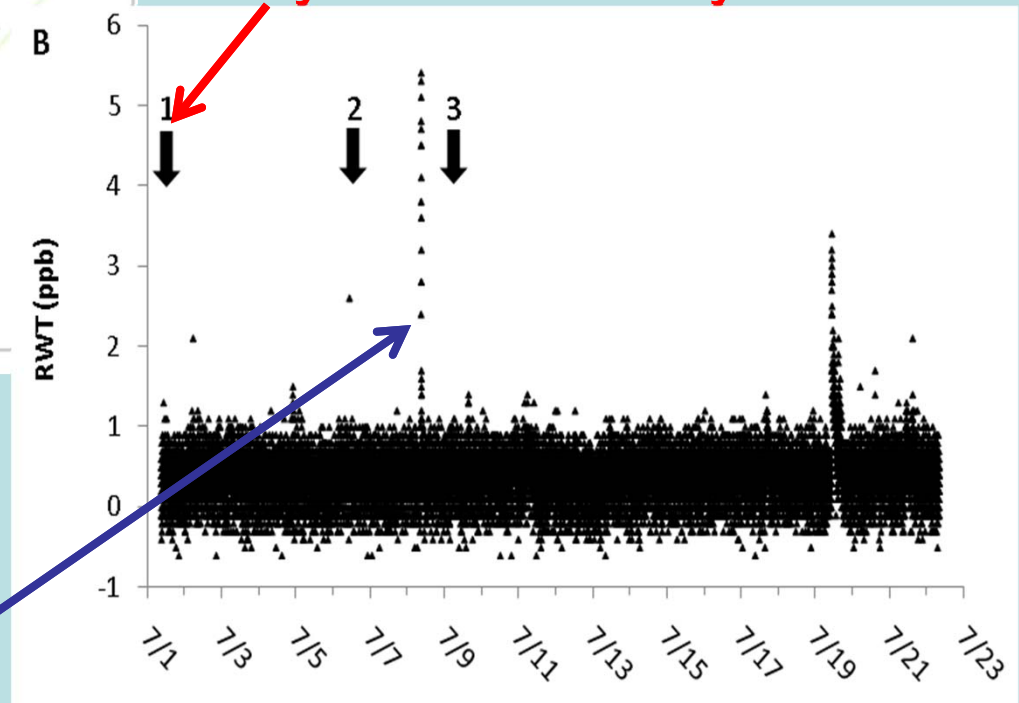
Nopal St. Storm Drain



Dye in Sanitary Sewer

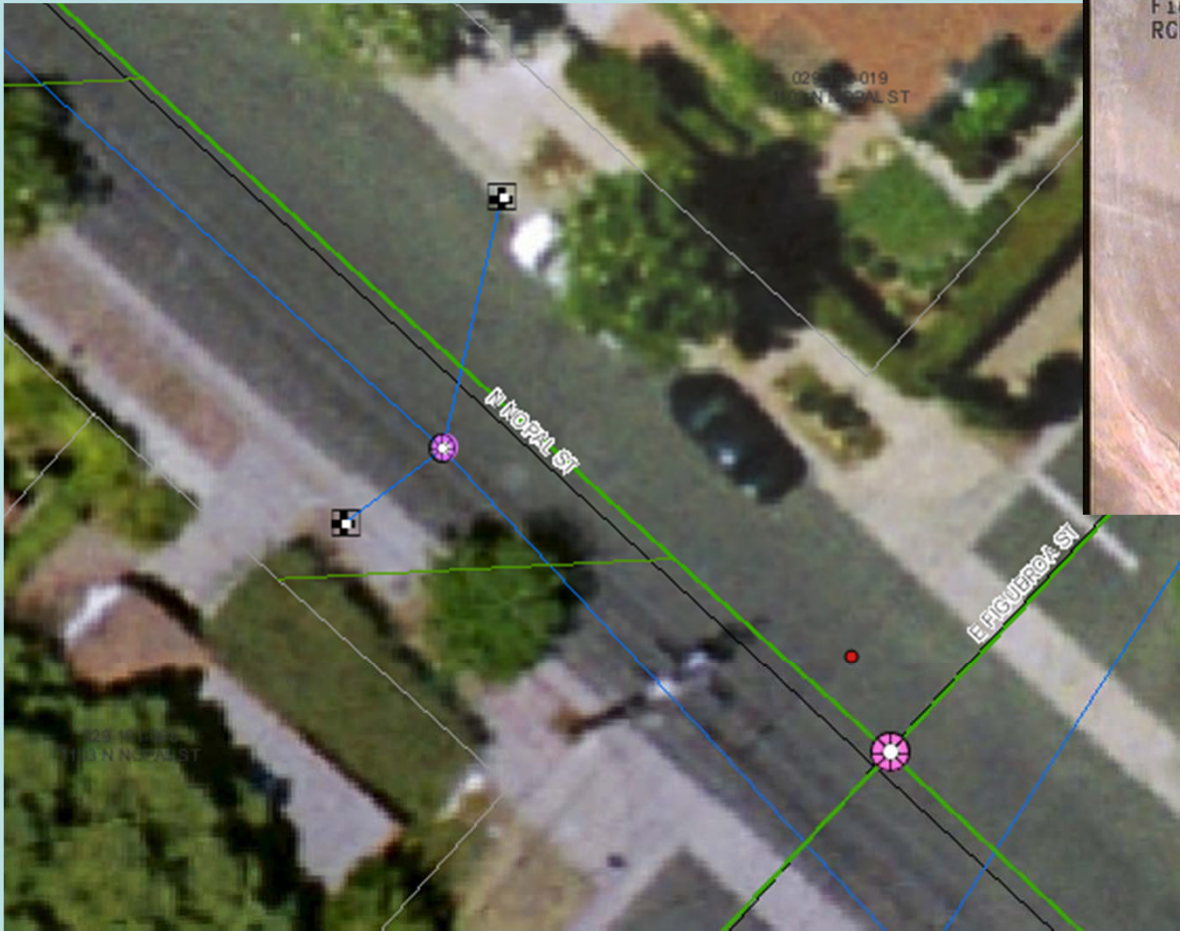


Probe in Storm Drain



Case Study

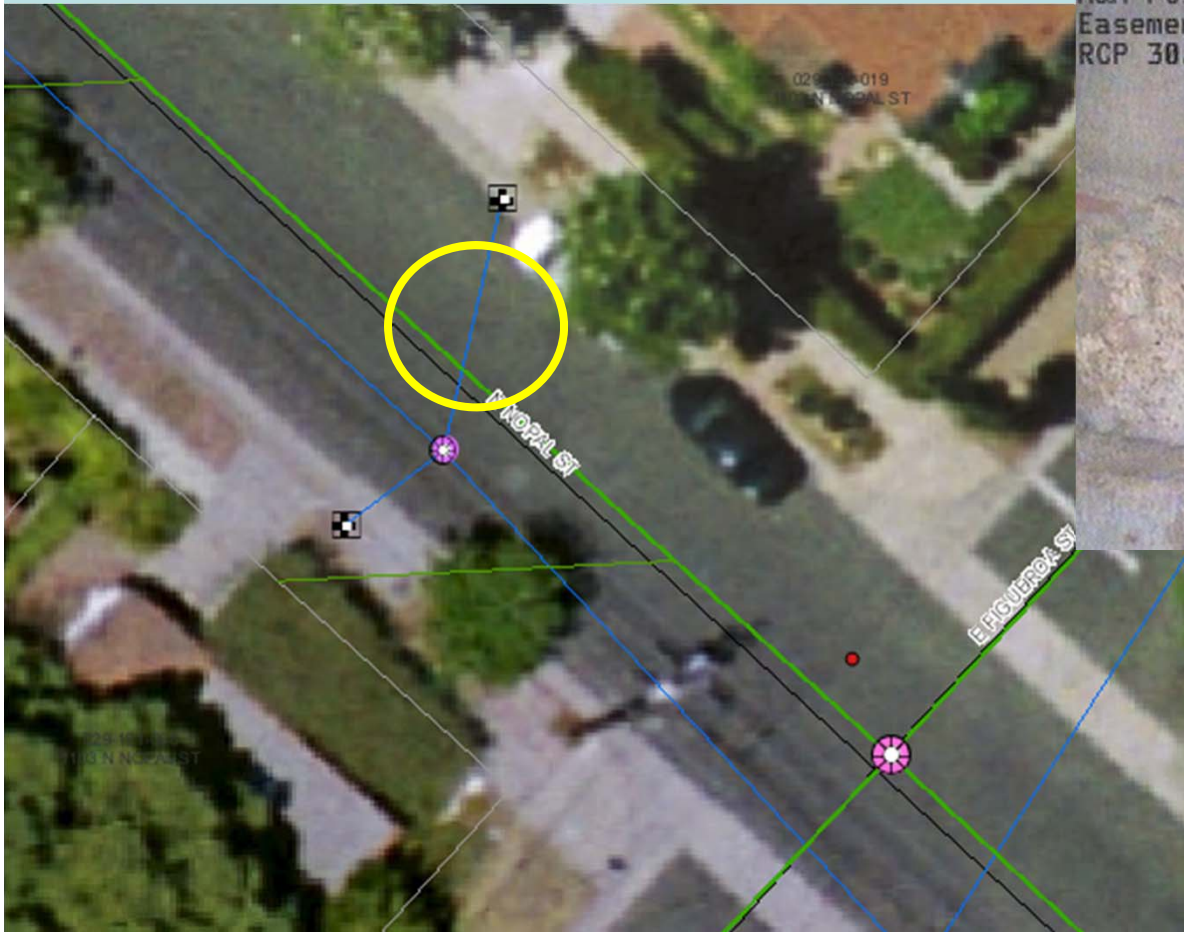
Nopal St. Storm Drain



Typical Groundwater Infiltration

Case Study

Nopal St. Storm Drain



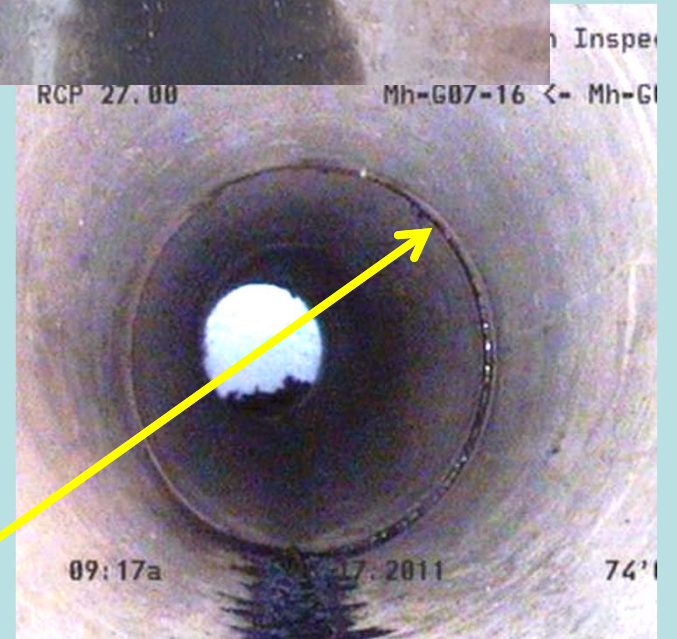
H&H PCS, Inc.
Easement
RCP 30.00

Storm Drain Inspe
Mh-G07-17 <- Js-G0



RCP 27.00

Mh-G07-16 <- Mh-G1



Sewage Infiltration

09:17a 17:2011 74'

Case Study

Carrillo St. Storm Drain

- Many years of high FIB, smell.
- Sporadic hits for human waste markers.
- Early CCTV work inconclusive.
- Recent CCTV showed water dripping into storm drain.
- Crack did not appear large.
- Dye testing of toilets in nearby businesses, camera in storm drain.


Two private laterals to 6 businesses







Results

- 
- Proof of concept for combining of MST, GIS, and IDDE, new approaches.
 - Confirmed four locations with sewage infiltration.
 - Beach warnings not correlated.
 - Rational plan can be developed:
 - Broad brush tools
 - Narrow and confirm
 - Pinpoint inputs
 - Repair and eliminate sources
 - Report for Coastal Managers



Additional Information

sbcreaks.com

- Sign up for our monthly e-newsletter
- Link to City TV segment on sewage sniffing dogs
- Water Quality reports

jmurray@SantaBarbaraCA.gov