

Goleta Water District Sustainability Plan



Brooke Welch

Senior Water Resources Analyst

Central Coast Sustainability Summit

October 16, 2019

Goleta Water District



- Established in 1944
- 5-member elected Board
- Provides water to 87,000 people in the Goleta Valley



Service Area



-  GWD Service Area
-  La Cumbre MWC
-  City of Santa Barbara
-  City of Goleta
-  UCSB
-  Water Treatment Plant
-  Wastewater Treatment Plant

University of California
Santa Barbara

Santa Barbara
Municipal Airport

Goleta Sanitary District
WWTP



Normal Water Supplies



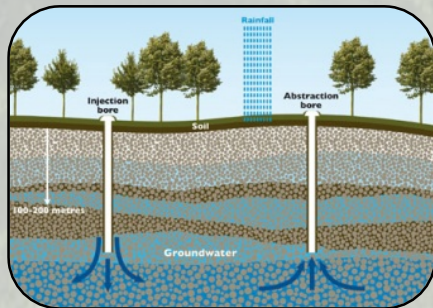
Recycled Water
1,000 AF
6%



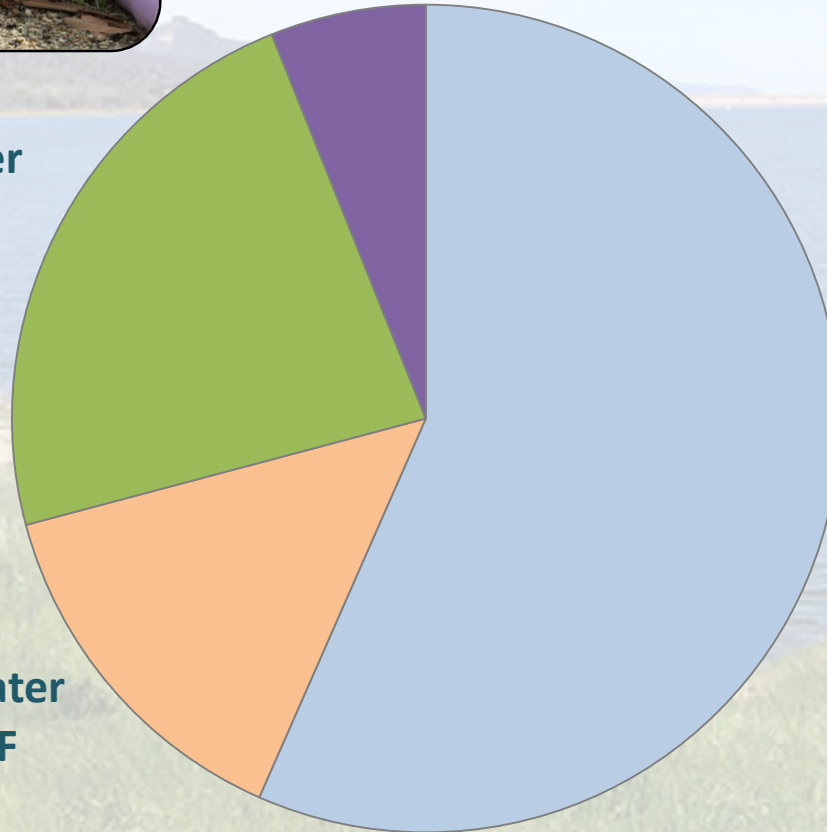
State Water
3,800 AF
23%



Lake Cachuma
9,322 AF
57%



Groundwater
2,350 AF
14%



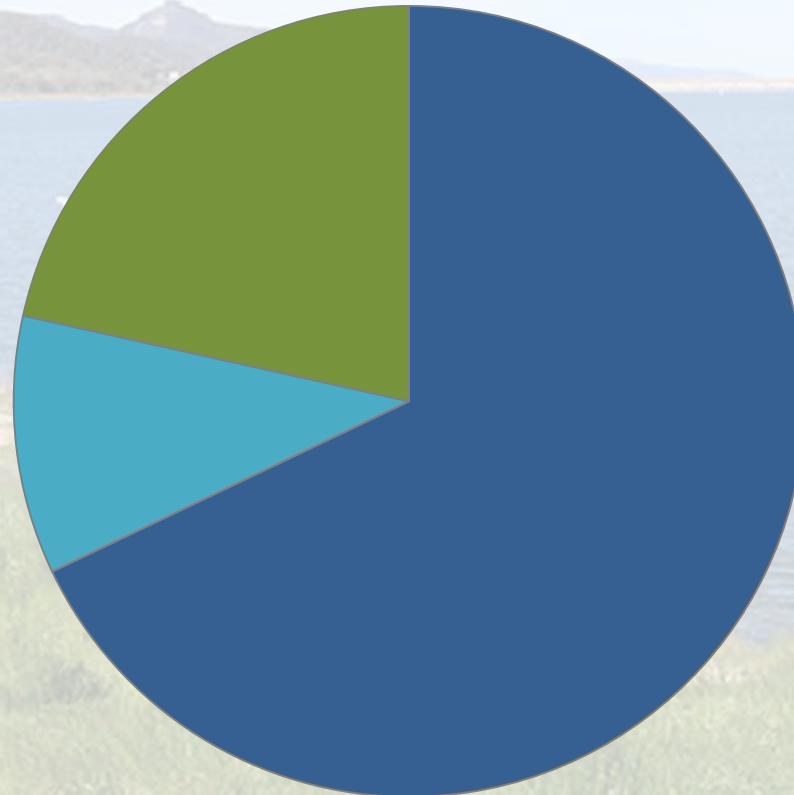
Water Uses in the Goleta Valley



Agriculture
21%

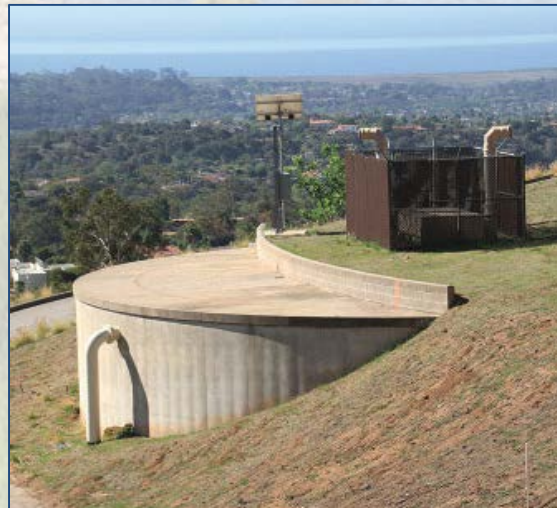


**Landscape
Irrigation**
11%



Urban
68%

Goleta Water District Operations & Assets

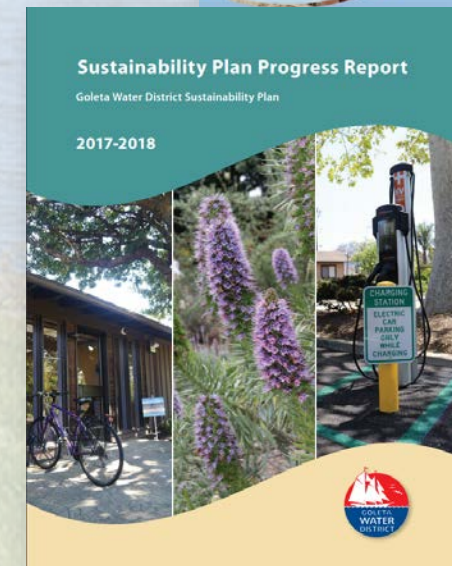
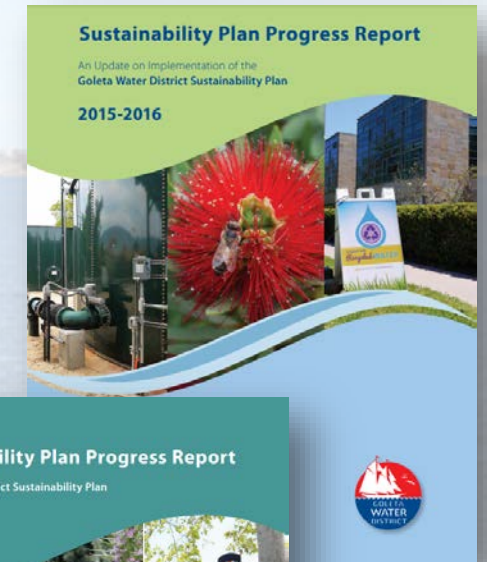
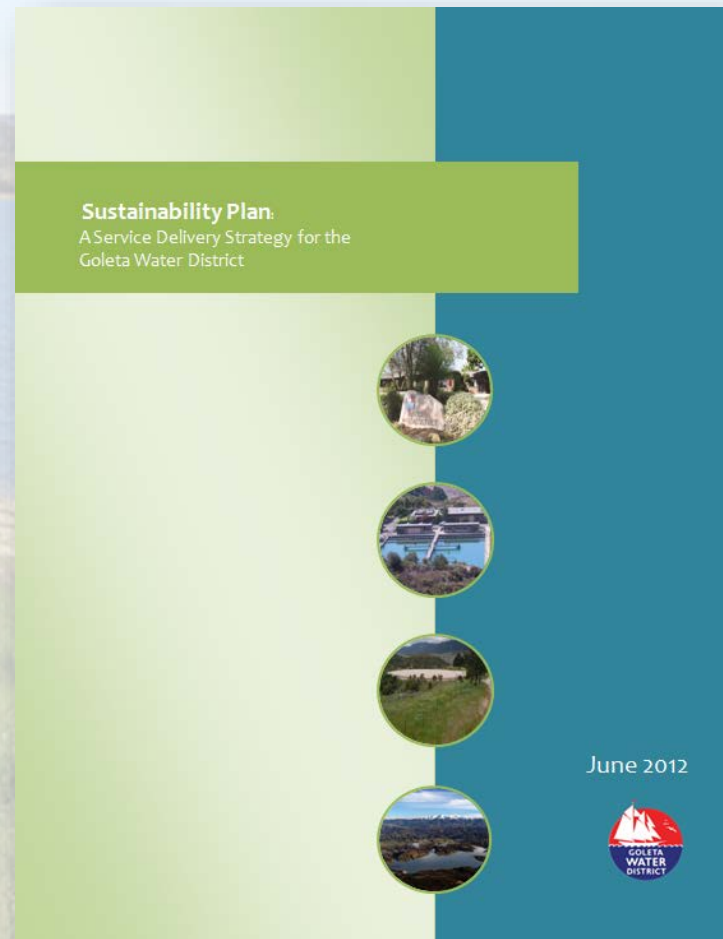
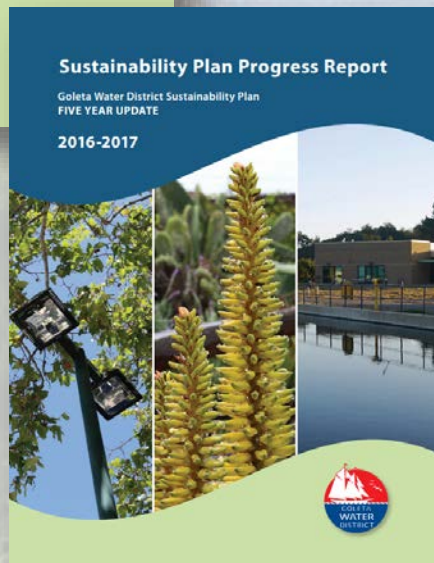
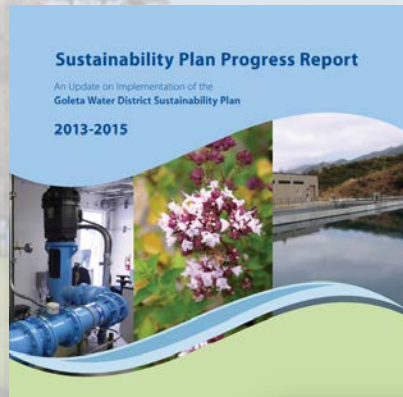


Service Delivery Context



Goleta Water District Sustainability Plan

Illustrates the District's sustainable approach to service delivery for current and future customers



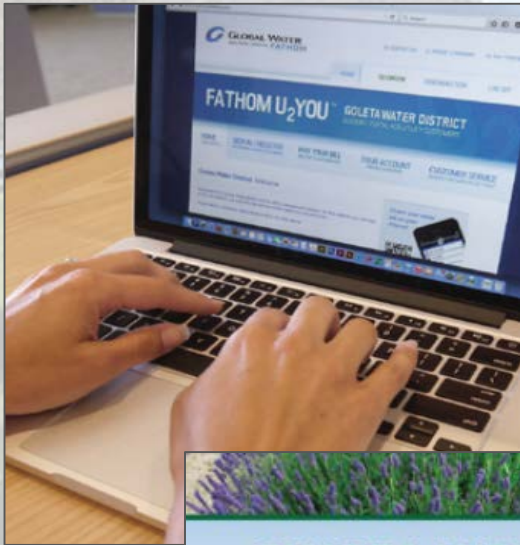
Three Guiding Principles



District Initiatives

3 Categories of Service Delivery

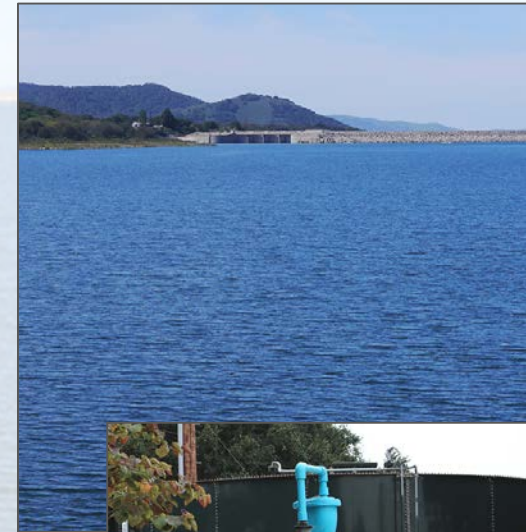
Customer Service and Business Operations



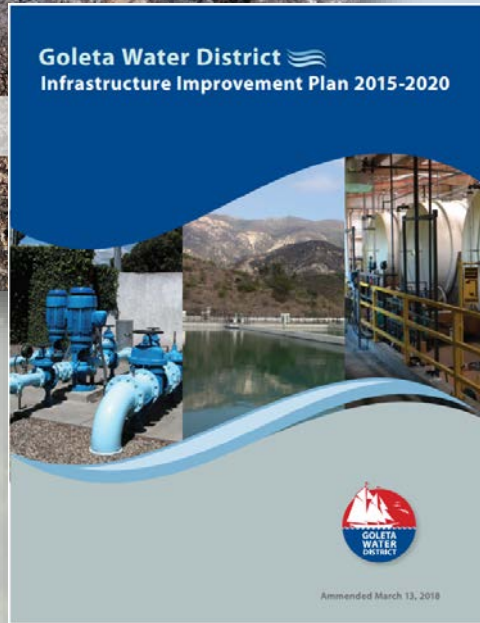
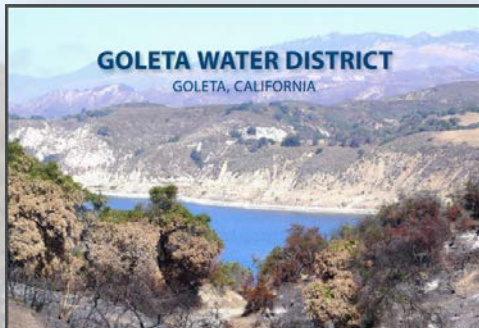
Administration Buildings and Fleet Management



Water Supply, Treatment, and Distribution System



Looking Through the Sustainability Lens



- Provides an overview of existing and future multi-year efforts in one document
- Informs decision-making

Looking Through the Sustainability Lens



Drought



Steelhead Trout

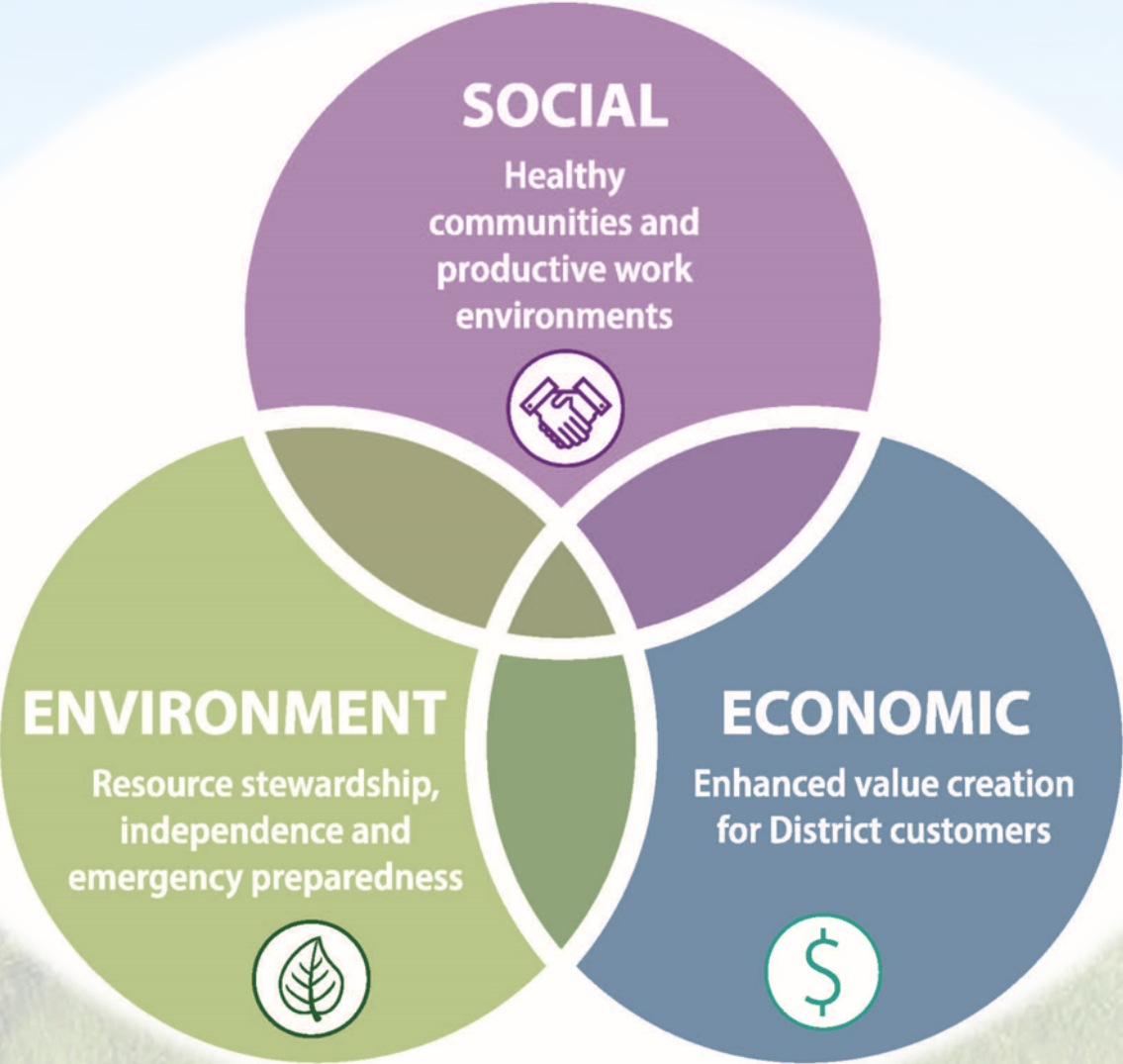


1950's Distribution System

Producing Sustainable Outcomes



District Strategies for Producing Sustainable Outcomes



Social Sustainability

SOCIAL
Healthy communities and



Independence and
emergency preparedness



for District customers



Social Sustainability Strategies



- ✓ Improve community education and public engagement



- ✓ Implement customer rebate and incentive programs



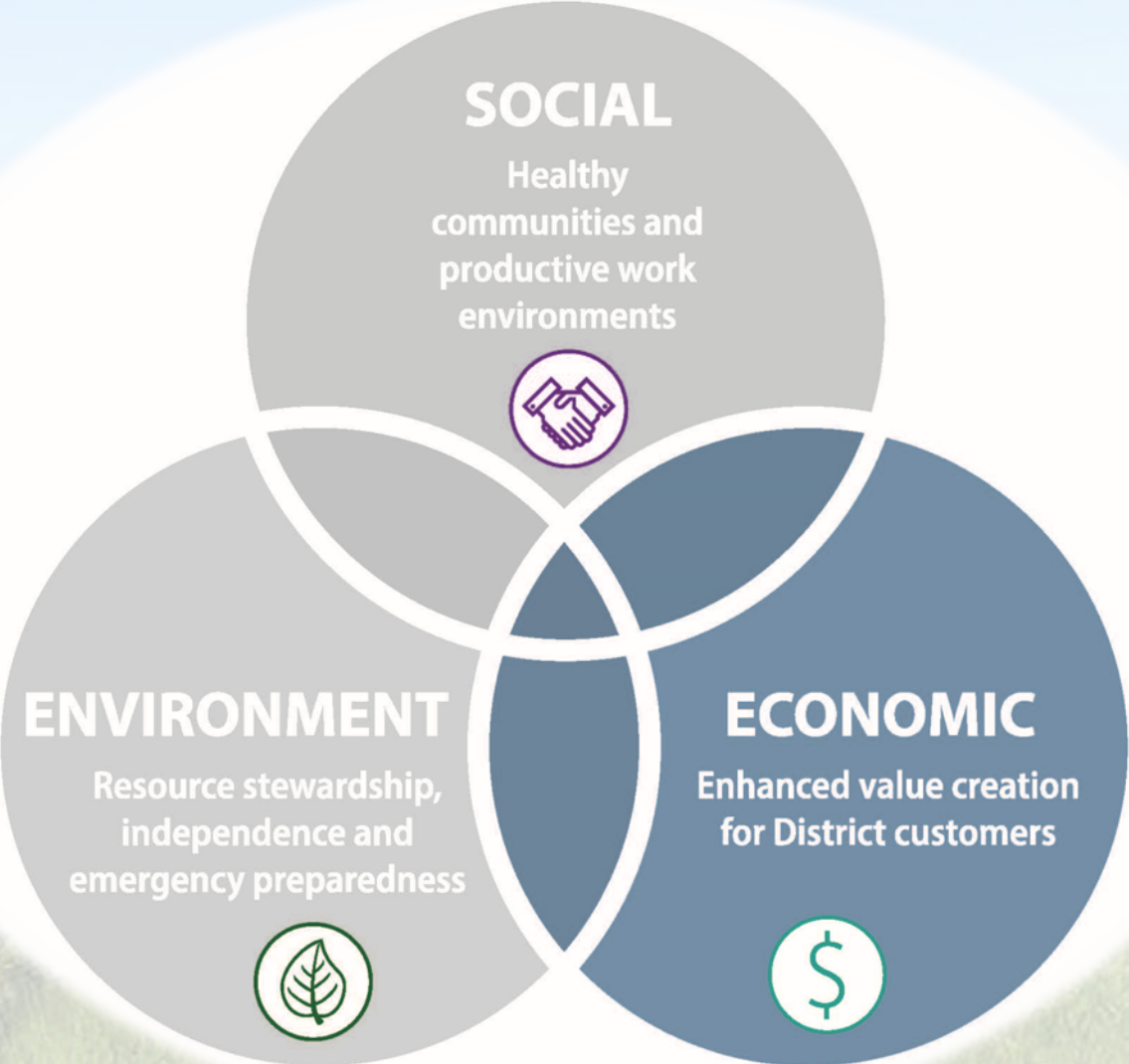
- ✓ Ensure safe, clean, reliable water supplies to protect health and safety of community



- ✓ Enhance the safety, wellbeing, and productivity of District workforce

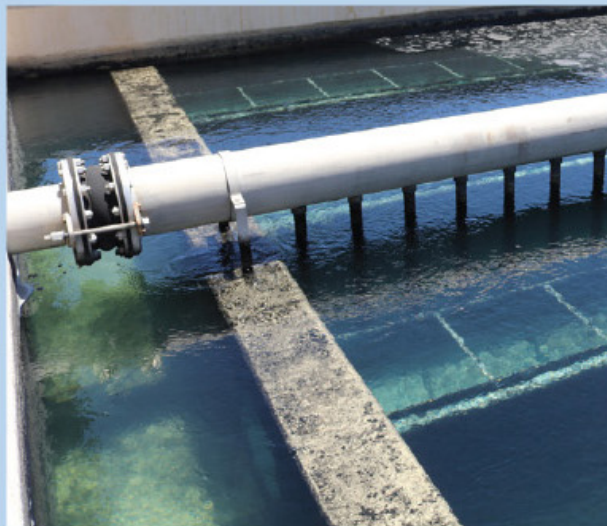


Economic Sustainability



Economic Sustainability

SOCIAL
Healthy communities and



independence and
emergency preparedness



for District customers



Economic Sustainability Strategies



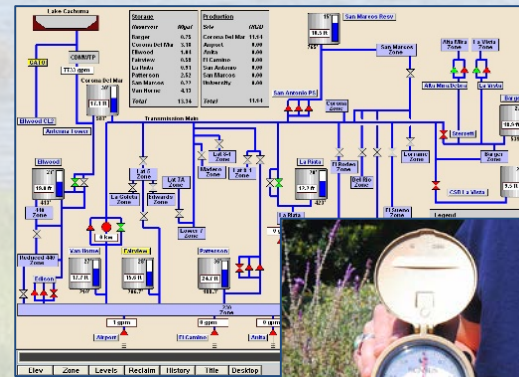
- ✓ Minimize water loss and maximize accounting of water use



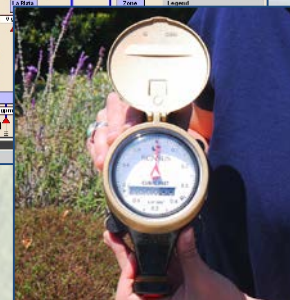
- ✓ Maintain, rehab, improve water distribution and treatment infrastructure



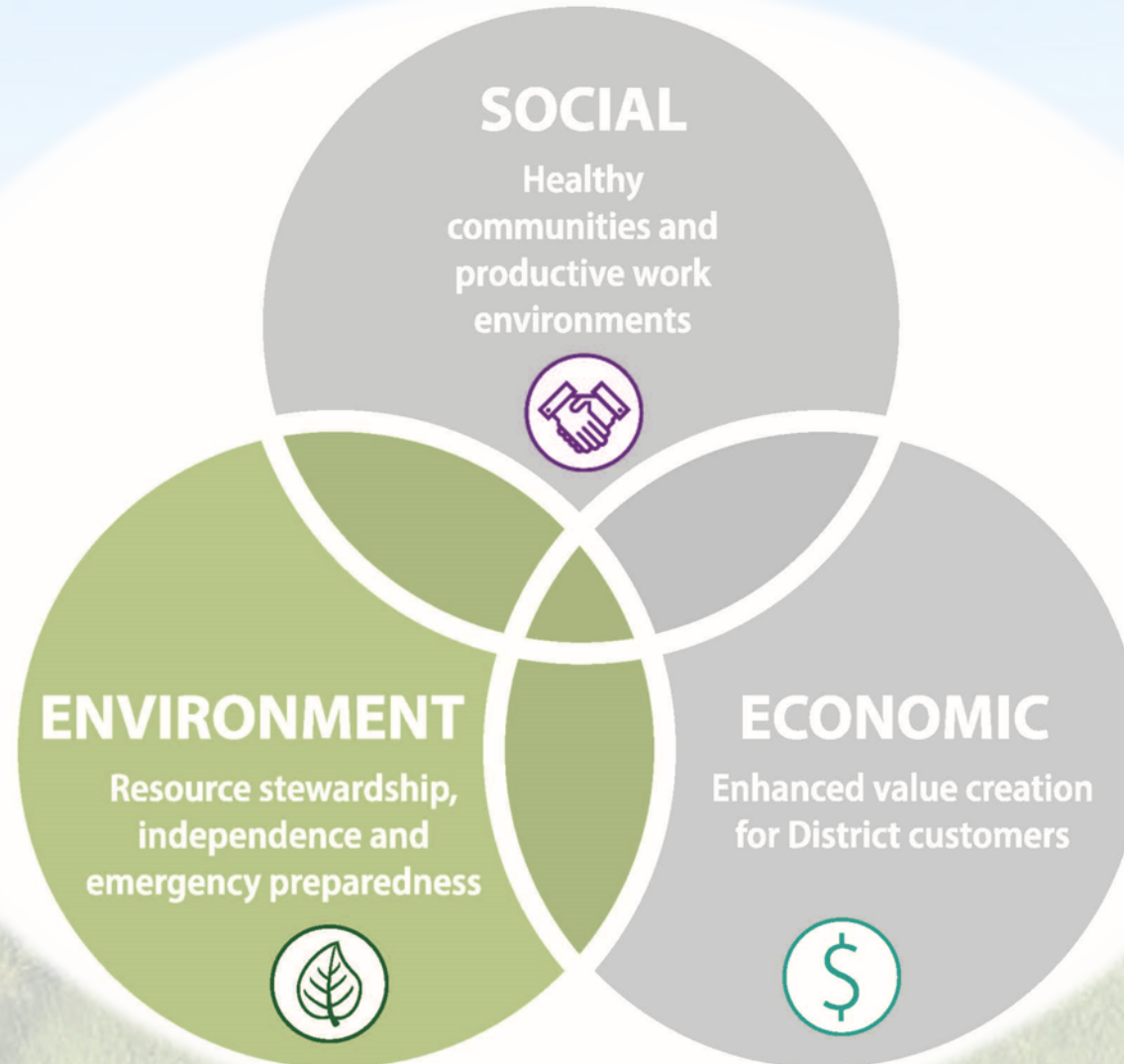
- ✓ Mitigate water supply risks and seek out alternative sources of water supply



- ✓ Keep pace with technological advances

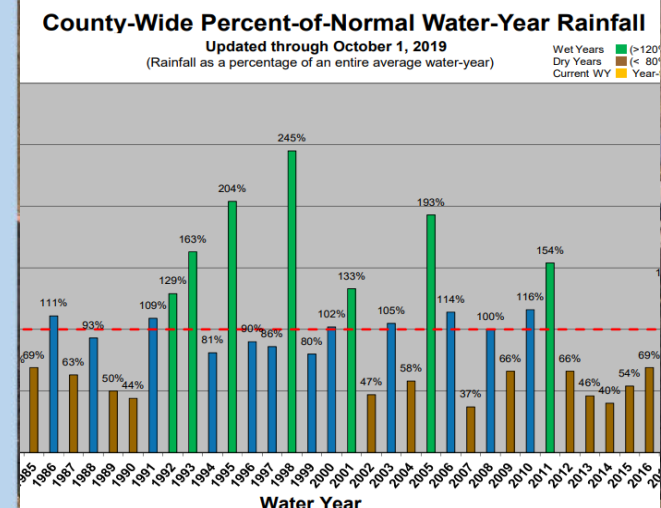
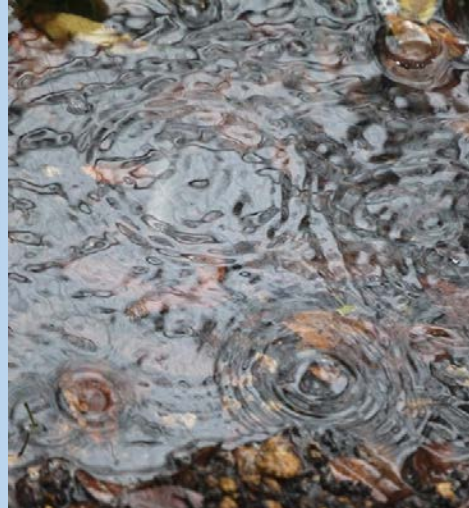


Environmental Sustainability



Environmental Sustainability

SOCIAL
Healthy communities and



resource stewardship,
independence and
emergency preparedness



enhanced value creation
for District customers



Environmental Sustainability Strategies



- ✓ Improve efficiency of water distribution system and mechanical equipment



- ✓ Explore and invest in renewable energy installations

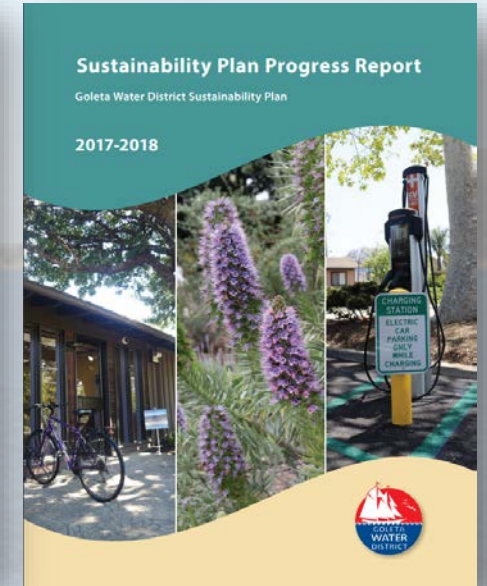
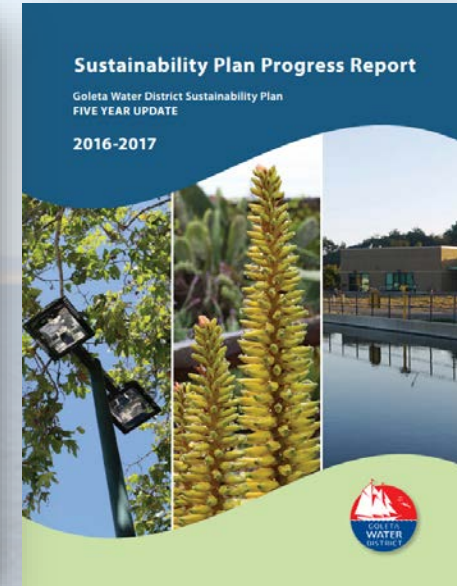
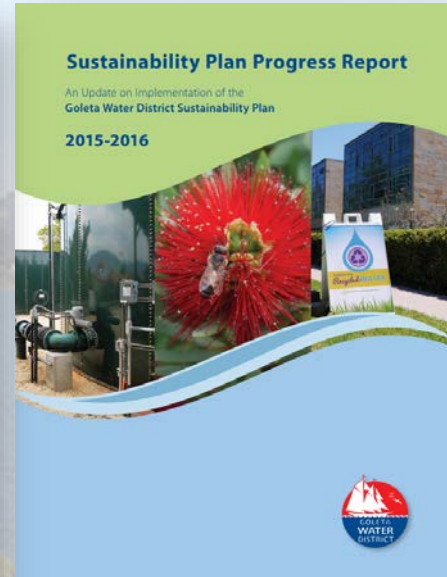
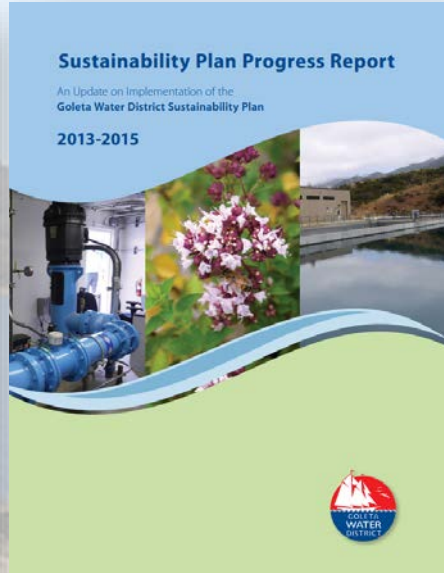
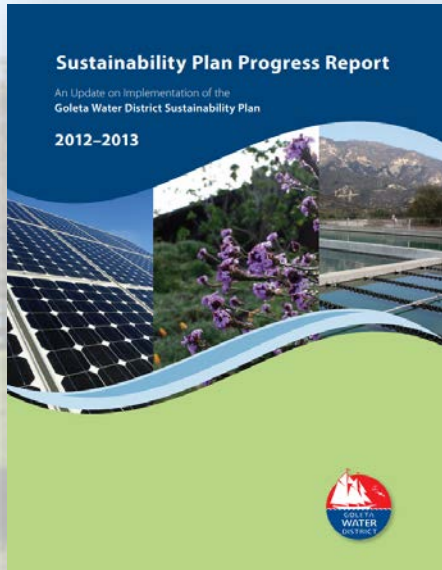


- ✓ Minimize environmental impacts of District administrative operations



- ✓ Improve sustainability of District fleet and heavy equipment

Annual Sustainability Plan Progress Reports



- Reflect back on District activities and sustainable outcomes
- Identify appropriate adjustments to priorities, timelines, or approaches

Tracking Progress



Seven Years of Progress



Expanded Customer Tools and Resources



Targeted outreach helped achieve a 30% reduction in water use



E-billing reduced customer walk-ins by 25% since 2013



1,108 customer rebates saved 128 million gallons of water



Seven Years of Progress



Climate Change Resiliency and Emergency Preparedness



LED lighting installations throughout District parking lot save energy



Vehicle charging station installed for employee and public use



Solar energy system offsets electricity use and costs at well site

Seven Years of Progress



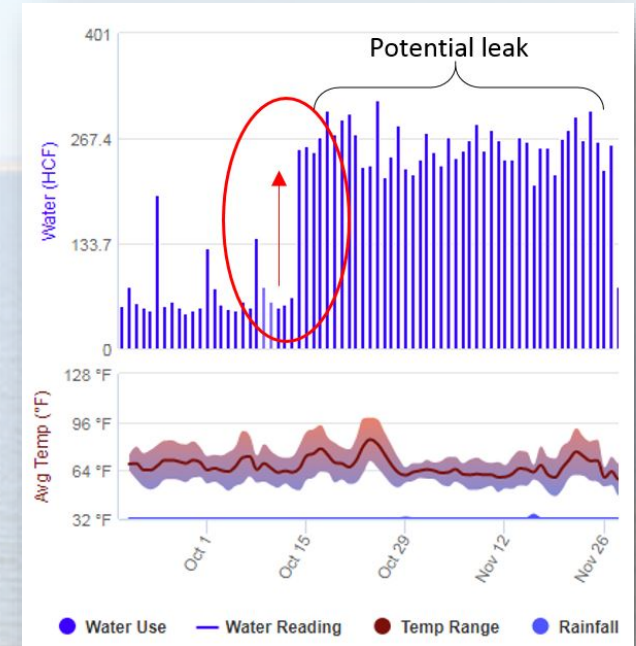
Service Reliability and Reduced System Water Loss



Well and groundwater infrastructure upgrades increase production capacity



Valve Replacement Program ensures ongoing reliable service to customers



Water loss control program saves water and costly emergency repairs

Looking Ahead

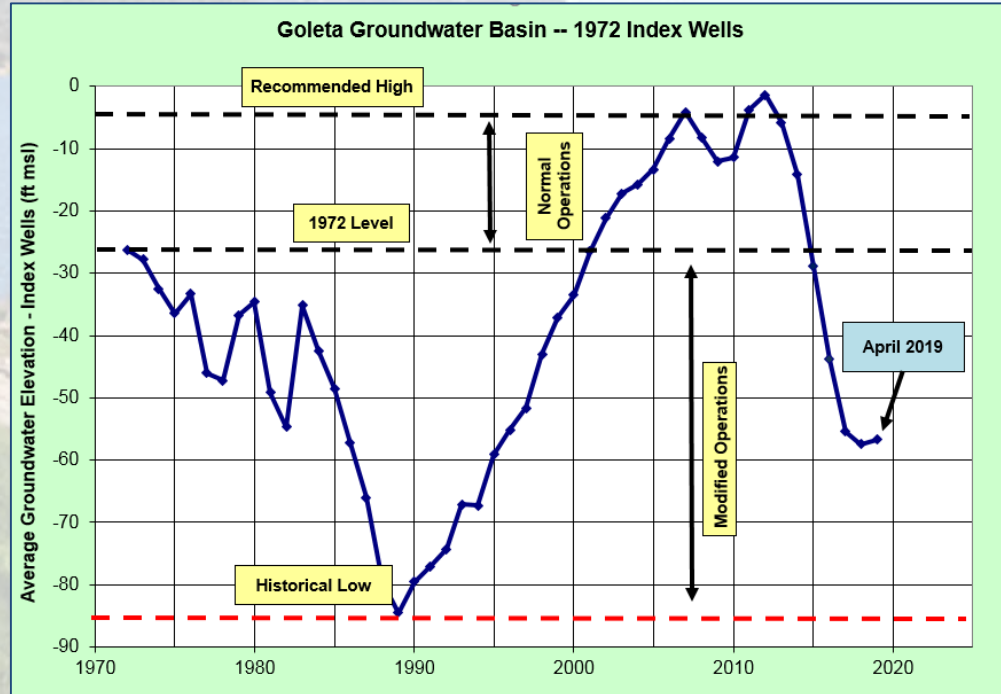


Looking Ahead

Addressing a changing service delivery environment



Drought resiliency



Replenish groundwater basin



Increasing water supply costs

Looking Ahead

Confronting new challenges



Severely burned watershed



Submerged vegetation in lake bed

Looking Ahead

Maintaining and replacing an aged distribution system



Thank you



Brooke Welch
Sr. Water Resources Analyst
www.goletawater.com

Goleta Water District Sustainability Plan

Available online at www.goletawater.com/documents